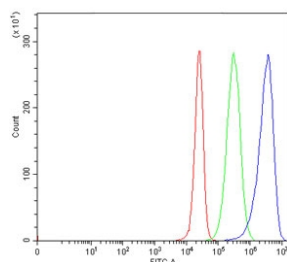


## ZW10 Antibody (RQ7261)

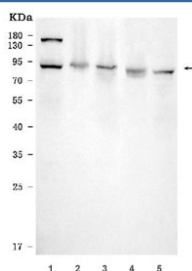
Catalog No.	Formulation	Size
RQ7261	0.5mg/ml if reconstituted with 0.2ml sterile DI water	100 ug

**Bulk quote request**

<b>Availability</b>	1-3 business days
<b>Species Reactivity</b>	Human
<b>Format</b>	Antigen affinity purified
<b>Clonality</b>	Polyclonal (rabbit origin)
<b>Isotype</b>	Rabbit IgG
<b>Purity</b>	Antigen affinity purified
<b>Buffer</b>	Lyophilized from 1X PBS with 2% Trehalose
<b>UniProt</b>	O43264
<b>Applications</b>	Western Blot : 0.5-1ug/ml Flow Cytometry : 1-3ug/million cells Direct ELISA : 0.1-0.5ug/ml
<b>Limitations</b>	This ZW10 antibody is available for research use only.



Flow cytometry testing of human 293T cells with ZW10 antibody at 1ug/million cells (blocked with goat sera); Red=cells alone, Green=isotype control, Blue= ZW10 antibody.



Western blot testing of human 1) HeLa, 2) K562, 3) Jurkat, 4) Caco-2 and 5) HL60 cell lysate with ZW10 antibody. Predicted molecular weight ~89 kDa.

## Description

Centromere/kinetochore protein zw10 homolog is a protein that in humans is encoded by the ZW10 gene. This gene encodes a protein that is one of many involved in mechanisms to ensure proper chromosome segregation during cell division. This protein is an essential component of the mitotic checkpoint, which prevents cells from prematurely exiting mitosis.

## Application Notes

Optimal dilution of the ZW10 antibody should be determined by the researcher.

## Immunogen

Recombinant human protein (amino acids K35-K779) was used as the immunogen for the ZW10 antibody.

## Storage

After reconstitution, the ZW10 antibody can be stored for up to one month at 4°C. For long-term, aliquot and store at -20°C. Avoid repeated freezing and thawing.