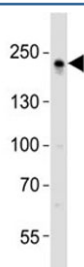


## ZO1 Antibody (F53019)

Catalog No.	Formulation	Size
F53019-0.4ML	In 1X PBS, pH 7.4, with 0.09% sodium azide	0.4 ml
F53019-0.08ML	In 1X PBS, pH 7.4, with 0.09% sodium azide	0.08 ml

[Bulk quote request](#)

<b>Availability</b>	1-3 business days
<b>Species Reactivity</b>	Human
<b>Format</b>	Antigen affinity purified
<b>Host</b>	Rabbit
<b>Clonality</b>	Polyclonal (rabbit origin)
<b>Isotype</b>	Rabbit Ig
<b>Purity</b>	Antigen affinity
<b>UniProt</b>	Q07157
<b>Applications</b>	Western Blot : 1:1000
<b>Limitations</b>	This ZO1 antibody is available for research use only.



Western blot analysis of lysate from A431 cell line using ZO1 antibody diluted at 1:1000.

## Description

The N-terminal of ZO1 may be involved in transducing a signal required for tight junction assembly, while the C-terminal may have specific properties of tight junctions. The alpha domain might be involved in stabilizing junctions. Plays a role in the regulation of cell migration by targeting CDC42BPB to the leading edge of migrating cells.

## Application Notes

Titration of the ZO1 antibody may be required due to differences in protocols and secondary/substrate sensitivity.

## Immunogen

This ZO1 antibody was produced from a rabbit immunized with a KLH conjugated synthetic peptide between 1328-1362 amino acids from the C-terminal region of human TJP1/ZO1.

## Storage

Aliquot the ZO1 antibody and store frozen at -20oC or colder. Avoid repeated freeze-thaw cycles.