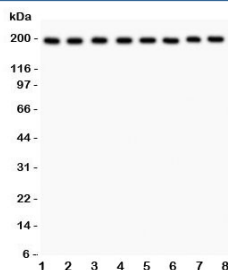


ZO-1 Antibody (R31647)

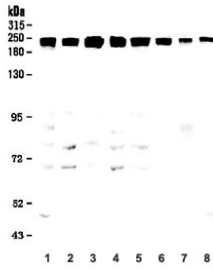
Catalog No.	Formulation	Size
R31647	0.5mg/ml if reconstituted with 0.2ml sterile DI water	100 ug

[Bulk quote request](#)

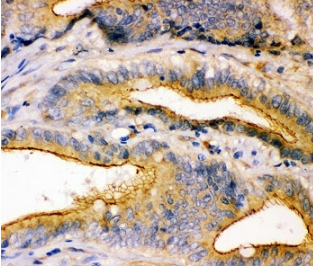
Availability	1-3 business days
Species Reactivity	Human, Mouse, Rat
Format	Antigen affinity purified
Host	Rabbit
Clonality	Polyclonal (rabbit origin)
Isotype	Rabbit IgG
Purity	Antigen affinity
Buffer	Lyophilized from 1X PBS with 2.5% BSA and 0.025% sodium azide
Gene ID	7082
Applications	Western Blot : 0.5-1ug/ml Immunohistochemistry (FFPE) : 0.5-1ug/ml Immunofluorescence : 2-4ug/ml Flow Cytometry : 1-3ug/million cells
Limitations	This ZO-1 antibody is available for research use only.



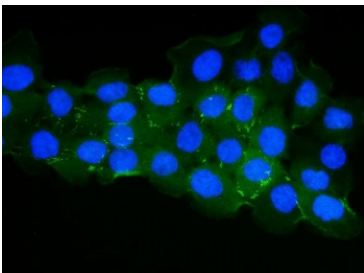
Western blot testing of ZO-1 antibody and Lane 1: rat liver; 2: mouse liver; 3: (r) NRK; 4: (r) PC12; 5: human HeLa; 6: (h) SMMC-7721; 7: (m) HEPA; 8: (h) COLO320 lysate.
Predicted molecular weight: ~194 kDa.



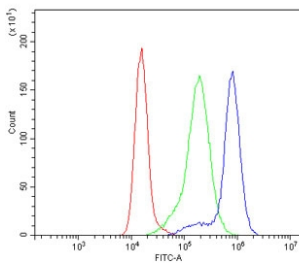
Western blot testing of human 1) A431, 2) Caco-2, 3) U-2 OS, 4) K562, 5) PC3, 6) T-47D, 7) rat ovary and 8) mouse ovary lysate with ZO-1 antibody. Predicted/observed molecular weight: ~194 kDa.



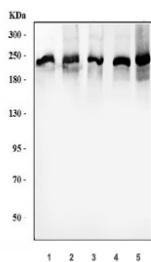
IHC-P: ZO-1 antibody testing of human intestinal cancer tissue. HIER: steamed with pH6 citrate buffer.



Immunofluorescent staining of FFPE human A431 cells with ZO-1 antibody (green) and DAPI nuclear stain (blue). HIER: steam section in pH6 citrate buffer for 20 min.



Flow cytometry testing of human K562 cells with ZO-1 antibody at 1 ug/million cells (blocked with goat sera); Red=cells alone, Green=isotype control, Blue= ZO-1 antibody.



Western blot testing of 1) human PC-3, 2) human Caco-2, 3) human COLO-320, 4) rat testis and 5) mouse testis tissue lysate with ZO-1 antibody. Predicted molecular weight: ~194 kDa.

Description

Zonula occludens protein 1, also called Tight junction protein 1, is a protein that in humans is encoded by the TJP1 gene. It is mapped to 15q13.1. This gene encodes a protein located on a cytoplasmic membrane surface of intercellular tight junctions (zonulae occludentes). ZO-1 may be involved in signal transduction at cell-cell junctions. It has been found that injected CagA associates with the epithelial tight-junction scaffolding protein TJP1/ZO-1 and the transmembrane protein junctional adhesion molecule, causing an ectopic assembly of tight junction components at sites of bacterial attachment, and altering the composition and function of the apical-junctional complex.

Application Notes

The stated application concentrations are suggested starting amounts. Titration of the ZO-1 antibody may be required due to differences in protocols and secondary/substrate sensitivity.

Immunogen

Human partial recombinant protein (AA 1178-1527) was used as the immunogen for this ZO-1 antibody.

Storage

After reconstitution, the ZO-1 antibody can be stored for up to one month at 4°C. For long-term, aliquot and store at -20°C. Avoid repeated freezing and thawing.