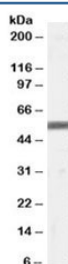


ZMPSTE24 Antibody (R33968)

| Catalog No. | Formulation | Size |
|--------------|---|--------|
| R33968-100UG | 0.5 mg/ml in 1X TBS, pH7.3, with 0.5% BSA (US sourced) and 0.02% sodium azide | 100 ug |

[Bulk quote request](#)

| | |
|--------------------|---|
| Availability | 1-3 business days |
| Species Reactivity | Human |
| Format | Antigen affinity purified |
| Host | Goat |
| Clonality | Polyclonal (goat origin) |
| Isotype | Goat Ig |
| Purity | Antigen affinity |
| Gene ID | 10269 |
| Applications | Western Blot : 0.5-1.5ug/ml ELISA (peptide) LOD : 1:128000 |
| Limitations | This ZMPSTE24 antibody is available for research use only. |



Western blot testing of human skin lysate with ZMPSTE24 antibody at 0.5ug/ml.
Predicted molecular weight: ~55kDa.

Description

Additional name(s) for this target protein: Zinc metallopeptidase (STE24 homolog, yeast); FACE1

Application Notes

Optimal dilution of the ZMPSTE24 antibody should be determined by the researcher.

Immunogen

Amino acids ERLQALKTMKQH were used as the immunogen for this ZMPSTE24 antibody.

Storage

Aliquot and store the ZMPSTE24 antibody at -20oC.