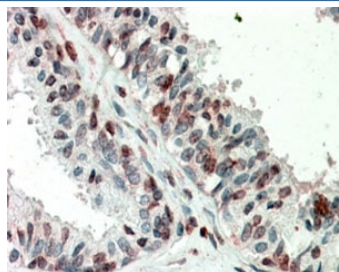


## ZIC3 Antibody (R34313)

Catalog No.	Formulation	Size
R34313-100UG	0.5 mg/ml in 1X TBS, pH7.3, with 0.5% BSA (US sourced) and 0.02% sodium azide	100 ug

[Bulk quote request](#)

Availability	1-3 business days
Species Reactivity	Human
Predicted Reactivity	Cow, Dog, Mouse, Pig, Rat
Format	Antigen affinity purified
Host	Goat
Clonality	Polyclonal (goat origin)
Isotype	Goat Ig
Purity	Antigen affinity
Gene ID	7547
Applications	Immunohistochemistry (FFPE) : 5-10ug/ml ELISA (peptide) LOD : 1:64000
Limitations	This ZIC3 antibody is available for research use only.



IHC testing of FFPE human prostate with ZIC3 antibody at 5ug/ml. HIER: steamed with pH6 citrate buffer, AP-staining.

## Description

Additional name(s) for this target protein: Zinc finger protein of the cerebellum 3, Zic family member 3

## Application Notes

Optimal dilution of the ZIC3 antibody should be determined by the researcher.

## **Immunogen**

Amino acids HVDNNQVHLGLR were used as the immunogen for this ZIC3 antibody.

## **Storage**

Aliquot and store the ZIC3 antibody at -20oC.