

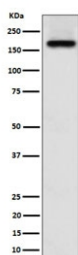
ZFYVE9 Antibody / Zinc finger FYVE domain-containing protein 9 [clone 28Z89] (RQ8483)

Catalog No.	Formulation	Size
RQ8483	Antibody in PBS with 0.02% sodium azide, 50% glycerol and 0.4-0.5mg/ml BSA	100 ul

Recombinant **RABBIT MONOCLONAL**

[Bulk quote request](#)

Availability	1-3 days
Species Reactivity	Human
Format	Purified
Clonality	Recombinant Rabbit Monoclonal
Isotype	Rabbit IgG
Clone Name	28Z89
Purity	Affinity chromatography
UniProt	O95405
Applications	Western Blot : 1:500-1:2000
Limitations	This ZFYVE9 antibody is available for research use only.



Western blot testing of human A673 cell lysate with ZFYVE9 antibody. Predicted molecular weight ~156 kDa.

Description

Early endosomal protein that functions to recruit SMAD2/SMAD3 to intracellular membranes and to the TGF-beta receptor. Plays a significant role in TGF-mediated signaling by regulating the subcellular location of SMAD2 and SMAD3 and modulating the transcriptional activity of the SMAD3/SMAD4 complex. Possibly associated with TGF-beta receptor internalization. [UniProt]

Application Notes

Optimal dilution of the ZFYVE9 antibody should be determined by the researcher.

Immunogen

A synthetic peptide from human Zinc finger FYVE domain-containing protein 9 protein was used as the immunogen for the ZFYVE9 antibody.

Storage

Store the ZFYVE9 antibody at -20oC.