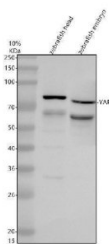


Zebrafish YAP1 Antibody (RZ1446)

| Catalog No. | Formulation | Size |
|-------------|---|--------|
| RZ1446 | 0.5mg/ml if reconstituted with 0.2ml sterile DI water | 100 ug |

[Bulk quote request](#)

| | |
|---------------------------|---|
| Species Reactivity | Zebrafish |
| Format | Antigen affinity purified |
| Host | Rabbit |
| Clonality | Polyclonal (rabbit origin) |
| Isotype | Rabbit Ig |
| Buffer | Lyophilized from a buffered saline solution containing 2% trehalose. Reconstitute with 0.2 mL distilled water to yield a final antibody concentration of 500 ug/mL. |
| UniProt | Q1L8J7 |
| Applications | Western Blot : 0.5-1ug/ml |
| Limitations | This Zebrafish YAP1 Antibody is available for research use only. |



Zebrafish YAP1 Antibody WB. Western blot analysis of YAP1 using anti-YAP1 antibody. Electrophoresis was performed on a 10% SDS-PAGE gel for 2 hours. The sample well of each lane was loaded with 30 ug of sample under reducing conditions. Lane 1: zebrafish head tissue lysates, Lane 2: zebrafish embryo tissue lysates. After electrophoresis, proteins were transferred to a nitrocellulose membrane at 150 mA for 50-90 minutes. Blocked the membrane with 5% non-fat milk/TBS for 1.5 hour at RT. The membrane was incubated with rabbit anti-YAP1 antigen antibody at 0.5 ug/ml overnight at 4oC, then washed with TBS-0.1%Tween 3 times with 5 minutes each and probed with a goat anti-rabbit IgG-HRP secondary antibody at a dilution of 1:5000 for 1.5 hour at RT. The signal is developed using an ECL Plus WB. Western blotting Substrate with Tanon 5200 system. A specific band was detected for YAP1 at approximately 75 kDa. The expected band size for YAP1 is at 48 kDa.

Description

Enables transcription coactivator activity. Involved in several processes, including dorsal/ventral axis specification; embryonic hemopoiesis; and heart formation. Acts upstream of with a positive effect on BMP signaling pathway. Acts upstream of or within several processes, including Kupffer's vesicle development; circulatory system development; and sensory system development. Located in chromatin and nucleus. Is expressed in several structures, including central nervous system; digestive system; mesoderm; sensory system; and tail bud. Used to study coloboma. Human ortholog(s)

of this gene implicated in uveal coloboma-cleft lip and palate-intellectual disability. Orthologous to human YAP1 (Yes1 associated transcriptional regulator).

Application Notes

The optimal working dilution of the Zebrafish YAP1 Antibody should be determined empirically by the investigator.

Immunogen

An E.coli-derived Zebrafish YAP1 recombinant protein (amino acids Q155-L442) was used as the immunogen for the Zebrafish YAP1 Antibody.

Storage

After reconstitution, the Zebrafish YAP1 Antibody can be stored for up to one month at 4oC. For long-term, aliquot and store at -20oC. Avoid repeated freezing and thawing.