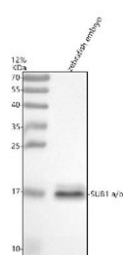


Zebrafish Sub1 Antibody / Isoforms a & b (RZ1038)

Catalog No.	Formulation	Size
RZ1038	0.5mg/ml if reconstituted with 0.2ml sterile DI water	100 ug

Bulk quote request

Availability	2-3 weeks
Species Reactivity	Zebrafish
Format	Antigen affinity purified
Clonality	Polyclonal (rabbit origin)
Isotype	Rabbit Ig
Purity	Antigen affinity chromatography
Buffer	Lyophilized from 1X PBS with 2% Trehalose
UniProt	Q504B1, Q6DGP6
Applications	Western Blot : 0.5-1 ug/ml
Limitations	This Zebrafish Sub1 antibody is available for research use only.



Western blot analysis of Sub1a/b protein using Sub1 antibody and zebrafish embryo tissue lysate. The predicted molecular weight of Sub1a/b is 14 kDa.

Description

Predicted to enable transcription coactivator activity. Predicted to act upstream of or within positive regulation of transcription initiation by RNA polymerase II. Predicted to be part of transcription regulator complex. Predicted to be active in nucleus. Is expressed in central nucleus of ventral telencephalon. Orthologous to human SUB1 (SUB1 regulator of transcription).

Application Notes

Optimal dilution of the Zebrafish Sub1 antibody should be determined by the researcher.

Immunogen

An E.coli-derived zebrafish Sub1a/b recombinant protein (amino acids N58-T123) was used as the immunogen for the Zebrafish Sub1 antibody. This antibody will detect the a and b isoforms.

Storage

After reconstitution, the Zebrafish Sub1 antibody can be stored for up to one month at 4oC. For long-term, aliquot and store at -20oC. Avoid repeated freezing and thawing.