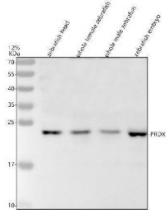


Zebrafish PRDX1 Antibody (RZ1341)

Catalog No.	Formulation	Size
RZ1341	0.5mg/ml if reconstituted with 0.2ml sterile DI water	100 ug

[Bulk quote request](#)

Species Reactivity	Zebrafish
Format	Antigen affinity purified
Host	Rabbit
Clonality	Polyclonal (rabbit origin)
Isotype	Rabbit Ig
Buffer	Lyophilized from a buffered saline solution containing 2% trehalose. Reconstitute with 0.2 mL distilled water to yield a final antibody concentration of 500 ug/mL.
UniProt	A2AWE1
Applications	Western Blot : 0.5-1ug/ml
Limitations	This Zebrafish PRDX1 Antibody is available for research use only.



Zebrafish PRDX1 Antibody WB. Western blot analysis of PRDX1 using anti-PRDX1 antibody. Electrophoresis was performed on a 12% SDS-PAGE gel for 2 hours. The sample well of each lane was loaded with 30 ug of sample under reducing conditions. Lane 1: zebrafish head tissue lysates, Lane 2: whole female zebrafish tissue lysates, Lane 3: whole male zebrafish tissue lysates, Lane 4: zebrafish embryo tissue lysates. After electrophoresis, proteins were transferred to a nitrocellulose membrane at 150 mA for 50-90 minutes. Blocked the membrane with 5% non-fat milk/TBS for 1.5 hour at RT. The membrane was incubated with rabbit anti-PRDX1 antigen antibody at 0.5 ug/ml overnight at 4oC, then washed with TBS-0.1%Tween 3 times with 5 minutes each and probed with a goat anti-rabbit IgG-HRP secondary antibody at a dilution of 1:5000 for 1.5 hour at RT. The signal is developed using an ECL Plus WB. Western blotting Substrate with Tanon 5200 system. A specific band was detected for PRDX1 at approximately 22 kDa. The expected band size for PRDX1 is at 22 kDa.

Application Notes

The optimal working dilution of the Zebrafish PRDX1 Antibody should be determined empirically by the investigator.

Immunogen

An E.coli-derived Zebrafish PRDX1 recombinant protein (amino acids M1-D115) was used as the immunogen for the

Zebrafish PRDX1 Antibody.

Storage

After reconstitution, the Zebrafish PRDX1 Antibody can be stored for up to one month at 4°C. For long-term, aliquot and store at -20°C. Avoid repeated freezing and thawing.