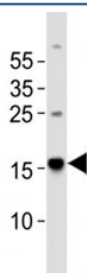


Zebrafish Map1lc3a Antibody (F53023)

Catalog No.	Formulation	Size
F53023-0.4ML	In 1X PBS, pH 7.4, with 0.09% sodium azide	0.4 ml
F53023-0.08ML	In 1X PBS, pH 7.4, with 0.09% sodium azide	0.08 ml

[Bulk quote request](#)

Availability	1-3 business days
Species Reactivity	Human, Zebrafish
Format	Antigen affinity purified
Host	Rabbit
Clonality	Polyclonal (rabbit origin)
Isotype	Rabbit Ig
Purity	Antigen affinity
UniProt	Q6NX90
Applications	Western Blot : 1:1000
Limitations	This Zebrafish Map1lc3a antibody is available for research use only.



Western blot analysis of lysate from human brain tissue using Map1lc3a antibody diluted at 1:1000.

Description

Microtubule-associated protein 1 light chain 3 alpha

Application Notes

Titration of the Map1lc3a antibody may be required due to differences in protocols and secondary/substrate sensitivity.

Immunogen

This Map1lc3a antibody was produced from a rabbit immunized with a KLH conjugated synthetic peptide between 91-123 amino acids of zebrafish Map1lc3a.

Storage

Aliquot the Map1lc3a antibody and store frozen at -20oC or colder. Avoid repeated freeze-thaw cycles.