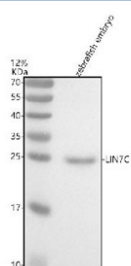


Zebrafish Lin7c Antibody / Protein lin-7 homolog C (RZ1153)

Catalog No.	Formulation	Size
RZ1153	0.5mg/ml if reconstituted with 0.2ml sterile DI water	100 ug

Bulk quote request

Availability	2-3 weeks
Species Reactivity	Zebrafish
Format	Antigen affinity purified
Clonality	Polyclonal (rabbit origin)
Isotype	Rabbit Ig
Purity	Antigen affinity chromatography
Buffer	Lyophilized from 1X PBS with 2% Trehalose
UniProt	Q66IB0
Applications	Western Blot : 0.5-1 ug/ml
Limitations	This Zebrafish Lin7c antibody is available for research use only.



Western blot analysis of Lin7c protein using Zebrafish Lin7c antibody and zebrafish embryo tissue lysate. The predicted molecular weight of LIN7C is ~22 kDa.

Description

Lin-7 homolog C is a protein that in humans is encoded by the LIN7C gene. LIN7C plays a role in establishing and maintaining the asymmetric distribution of channels and receptors at the plasma membrane of polarized cells. It forms membrane-associated multiprotein complexes that may regulate delivery and recycling of proteins to the correct membrane domains. The tripartite complex composed of LIN7 (LIN7A, LIN7B or LIN7C), CASK and APBA1 may have the potential to couple synaptic vesicle exocytosis to cell adhesion in brain. LIN7C ensures the proper localization of GRIN2B (subunit 2B of the NMDA receptor) to neuronal postsynaptic density and may function in localizing synaptic vesicles at synapses where it is recruited by beta-catenin and cadherin. It is also required to localize Kir2 channels, GABA transporter (SLC6A12) and EGFR/ERBB1, ERBB2, ERBB3 and ERBB4 to the basolateral membrane of epithelial cells.

Application Notes

Optimal dilution of the Zebrafish Lin7c antibody should be determined by the researcher.

Immunogen

An E.coli-derived zebrafish Lin7c recombinant protein (amino acids M1-A73) was used as the immunogen for the Zebrafish Lin7c antibody.

Storage

After reconstitution, the Zebrafish Lin7c antibody can be stored for up to one month at 4oC. For long-term, aliquot and store at -20oC. Avoid repeated freezing and thawing.