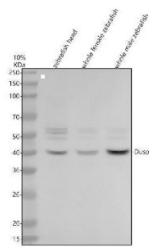


## Zebrafish DUSP1 Antibody (RZ1463)

Catalog No.	Formulation	Size
RZ1463	0.5mg/ml if reconstituted with 0.2ml sterile DI water	100 ug

[Bulk quote request](#)

<b>Species Reactivity</b>	Zebrafish
<b>Format</b>	Antigen affinity purified
<b>Host</b>	Rabbit
<b>Clonality</b>	Polyclonal (rabbit origin)
<b>Isotype</b>	Rabbit Ig
<b>Buffer</b>	Lyophilized from a buffered saline solution containing 2% trehalose. Reconstitute with 0.2 mL distilled water to yield a final antibody concentration of 500 ug/mL.
<b>UniProt</b>	Q7ZVL8
<b>Applications</b>	Western Blot : 0.5-1ug/ml
<b>Limitations</b>	This Zebrafish DUSP1 Antibody is available for research use only.



Zebrafish DUSP1 Antibody WB. Western blot analysis of MKP-1/DUSP1 using anti-MKP-1/DUSP1 antibody. Electrophoresis was performed on a 10% SDS-PAGE gel for 2 hours. The sample well of each lane was loaded with 30 ug of sample under reducing conditions. Lane 1: zebrafish head tissue lysates, Lane 2: whole female zebrafish tissue lysates, Lane 3: whole male zebrafish tissue lysates. After electrophoresis, proteins were transferred to a nitrocellulose membrane at 150 mA for 50-90 minutes. Blocked the membrane with 5% non-fat milk/TBS for 1.5 hour at RT. The membrane was incubated with rabbit anti-MKP-1/DUSP1 antigen antibody at 0.5 ug/ml overnight at 4oC, then washed with TBS-0.1%Tween 3 times with 5 minutes each and probed with a goat anti-rabbit IgG-HRP secondary antibody at a dilution of 1:5000 for 1.5 hour at RT. The signal is developed using an ECL Plus WB. Western blotting Substrate with Tanon 5200 system. A specific band was detected for MKP-1/DUSP1 at approximately 40 kDa. The expected band size for MKP-1/DUSP1 is at 40 kDa.

### Description

Predicted to enable phosphoprotein phosphatase activity. Predicted to be involved in endoderm formation; negative regulation of p38MAPK cascade; and signal transduction. Predicted to act upstream of or within protein dephosphorylation. Predicted to be active in cytoplasm and nucleus. Is expressed in several structures, including forebrain neural keel; margin; mesoderm; nervous system; and neural tube. Human ortholog(s) of this gene implicated in

breast cancer. Orthologous to human DUSP1 (dual specificity phosphatase 1).

## **Application Notes**

The optimal working dilution of the Zebrafish DUSP1 Antibody should be determined empirically by the investigator.

## **Immunogen**

An E.coli-derived Zebrafish MKP-1/DUSP1 recombinant protein (amino acids M1-P353) was used as the immunogen for the Zebrafish DUSP1 Antibody.

## **Storage**

After reconstitution, the Zebrafish DUSP1 Antibody can be stored for up to one month at 4°C. For long-term, aliquot and store at -20°C. Avoid repeated freezing and thawing.