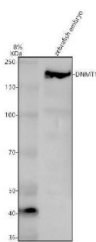


## Zebrafish DNMT1 Antibody (RZ1423)

Catalog No.	Formulation	Size
RZ1423	0.5mg/ml if reconstituted with 0.2ml sterile DI water	100 ug

[Bulk quote request](#)

<b>Species Reactivity</b>	Zebrafish
<b>Format</b>	Antigen affinity purified
<b>Host</b>	Rabbit
<b>Clonality</b>	Polyclonal (rabbit origin)
<b>Isotype</b>	Rabbit Ig
<b>Buffer</b>	Lyophilized from a buffered saline solution containing 2% trehalose. Reconstitute with 0.2 mL distilled water to yield a final antibody concentration of 500 ug/mL.
<b>UniProt</b>	A0A8M6YUX4
<b>Applications</b>	Western Blot : 0.5-1ug/ml
<b>Limitations</b>	This Zebrafish DNMT1 Antibody is available for research use only.



Zebrafish DNMT1 Antibody WB. Western blot analysis of DNMT1 using anti-DNMT1 antibody. Electrophoresis was performed on a 8% SDS-PAGE gel for 2 hours. The sample well of each lane was loaded with 30 ug of sample under reducing conditions. Lane 1: zebrafish embryo tissue lysates. After electrophoresis, proteins were transferred to a nitrocellulose membrane at 150 mA for 50-90 minutes. Blocked the membrane with 5% non-fat milk/TBS for 1.5 hour at RT. The membrane was incubated with rabbit anti-DNMT1 antigen antibody at 0.5 ug/ml overnight at 4oC, then washed with TBS-0.1%Tween 3 times with 5 minutes each and probed with a goat anti-rabbit IgG-HRP secondary antibody at a dilution of 1:5000 for 1.5 hour at RT. The signal is developed using an ECL Plus WB. Western blotting Substrate with Tanon 5200 system. A specific band was detected for DNMT1 at approximately 169 kDa. The expected band size for DNMT1 is at 169 kDa.

### Description

Enables DNA (cytosine-5-)-methyltransferase activity, acting on CpG substrates. Acts upstream of or within several processes, including camera-type eye development; digestive system development; and hemopoiesis. Predicted to be active in nucleus. Is expressed in several structures, including digestive system; immature eye; nervous system; neural tube; and pectoral fin. Human ortholog(s) of this gene implicated in Graves' disease; autosomal dominant cerebellar ataxia, deafness and narcolepsy; hereditary sensory neuropathy; hereditary sensory neuropathy type 1E; and lung non-

small cell carcinoma. Orthologous to human DNMT1 (DNA methyltransferase 1).

## Application Notes

The optimal working dilution of the Zebrafish DNMT1 Antibody should be determined empirically by the investigator.

## Immunogen

An E.coli-derived Zebrafish DNMT1 recombinant protein (amino acids E11-D1505) was used as the immunogen for the Zebrafish DNMT1 Antibody.

## Storage

After reconstitution, the Zebrafish DNMT1 Antibody can be stored for up to one month at 4oC. For long-term, aliquot and store at -20oC. Avoid repeated freezing and thawing.