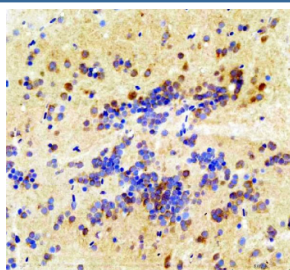


Zebrafish Csnk2b Antibody / Casein kinase 2 beta (RZ1122)

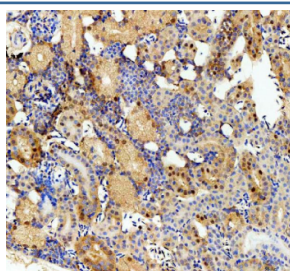
| Catalog No. | Formulation | Size |
|-------------|---|--------|
| RZ1122 | 0.5mg/ml if reconstituted with 0.2ml sterile DI water | 100 ug |

Bulk quote request

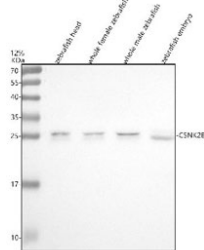
| | |
|---------------------------|---|
| Availability | 2-3 weeks |
| Species Reactivity | Zebrafish |
| Format | Antigen affinity purified |
| Clonality | Polyclonal (rabbit origin) |
| Isotype | Rabbit Ig |
| Purity | Antigen affinity chromatography |
| Buffer | Lyophilized from 1X PBS with 2% Trehalose |
| UniProt | Q91398 |
| Applications | Western Blot : 0.5-1 ug/ml Immunohistochemistry (FFPE) : 2-5 ug/ml |
| Limitations | This Zebrafish Csnk2b antibody is available for research use only. |



IHC staining of FFPE zebrafish brain tissue with Zebrafish Csnk2b antibody, HRP secondary and DAB substrate. HIER: boil tissue sections in pH8 EDTA for 20 min and allow to cool before testing.



IHC staining of FFPE zebrafish kidney tissue with Zebrafish Csnk2b antibody, HRP secondary and DAB substrate. HIER: boil tissue sections in pH8 EDTA for 20 min and allow to cool before testing.



Western blot analysis of Csnk2b protein using Zebrafish Csnk2b antibody and 1) zebrafish head, 2) whole female zebrafish, 3) whole male zebrafish and 4) zebrafish embryo tissue lysate. Predicted molecular weight ~25 kDa.

Description

Casein kinase II subunit beta is a protein that in humans is encoded by the CSNK2B gene. This gene encodes the beta subunit of casein kinase II, a ubiquitous protein kinase which regulates metabolic pathways, signal transduction, transcription, translation, and replication. The enzyme is composed of three subunits, alpha, alpha prime and beta, which form a tetrameric holoenzyme. The alpha and alpha prime subunits are catalytic, while the beta subunit serves regulatory functions. The enzyme localizes to the endoplasmic reticulum and the Golgi apparatus. Two transcript variants encoding different isoforms have been found for this gene.

Application Notes

Optimal dilution of the Zebrafish Csnk2b antibody should be determined by the researcher.

Immunogen

An E.coli-derived zebrafish Csnk2b recombinant protein (amino acids M1-R215) was used as the immunogen for the Zebrafish Csnk2b antibody.

Storage

After reconstitution, the Zebrafish Csnk2b antibody can be stored for up to one month at 4oC. For long-term, aliquot and store at -20oC. Avoid repeated freezing and thawing.