

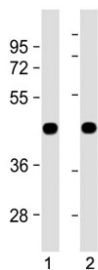
Zebrafish Beta actin Antibody / Actba (F52293)

Catalog No.	Formulation	Size
F52293-0.4ML	In 1X PBS, pH 7.4, with 0.09% sodium azide	0.4 ml
F52293-0.08ML	In 1X PBS, pH 7.4, with 0.09% sodium azide	0.08 ml

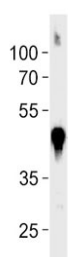
 Citations (1)

[Bulk quote request](#)

Availability	1-3 business days
Species Reactivity	Zebrafish
Predicted Reactivity	Human, Mouse, Rat, Bovine, Chicken, Rabbit, Xenopus, Drosophila, C. elegans
Format	Antigen affinity purified
Host	Rabbit
Clonality	Polyclonal (rabbit origin)
Isotype	Rabbit Ig
Purity	Antigen affinity
UniProt	Q7ZV17
Applications	Western Blot : 1:1000
Limitations	This zebrafish beta actin antibody is available for research use only.



Zebrafish Beta Actin Antibody WB. Western blot testing of 1) zebrafish lysate and 2) ZF4 cell lysate with zebrafish beta actin antibody.



Western blot testing of zebrafish muscle lysate with zebrafish beta actin antibody.

Description

Zebrafish Beta actin Antibody detects Actba protein. Actins are highly conserved proteins that are involved in various types of cell motility and are ubiquitously expressed in all eukaryotic cells. Expression of beta Actin is strongest in lymph tissues with weaker expression seen in muscle and heart.

This Zebrafish antibody is part of a [broader Zebrafish / Danio rerio antibody panel](#) offered by NSJ Bioreagents.

Application Notes

Titration of the zebrafish beta actin antibody may be required due to differences in protocols and secondary/substrate sensitivity.

Immunogen

A portion of amino acids 188-215 from the zebrafish actba protein was used as the immunogen for this beta actin antibody.

Storage

Aliquot the zebrafish beta actin antibody and store frozen at -20oC or colder. Avoid repeated freeze-thaw cycles.