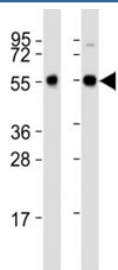


Zebrafish Beclin-1 Antibody (F53282)

Catalog No.	Formulation	Size
F53282-0.4ML	In 1X PBS, pH 7.4, with 0.09% sodium azide	0.4 ml
F53282-0.08ML	In 1X PBS, pH 7.4, with 0.09% sodium azide	0.08 ml

[Bulk quote request](#)

Availability	1-3 business days
Species Reactivity	Zebrafish
Format	Antigen affinity purified
Host	Rabbit
Clonality	Polyclonal (rabbit origin)
Isotype	Rabbit Ig
Purity	Antigen affinity
UniProt	A2A135
Applications	Western Blot : 1:2000
Limitations	This zebrafish Beclin-1 antibody is available for research use only.



Western blot testing of Beclin-1 antibody at 1:2000 dilution. Lane 1: Zebrafish lysate; 2: ZF4 lysate; Predicted band size : 51 kDa.

Description

Beclin 1 is thought to function as a VPS and autophagy protein as part of a complex with Class III PI3 kinase, Vps34.

This Zebrafish antibody is part of a [broader Zebrafish/Danio rerio antibody panel](#) offered by NSJ Bioreagents.

Application Notes

Titration of the zebrafish Beclin-1 antibody may be required due to differences in protocols and secondary/substrate sensitivity.

Immunogen

This Beclin-1 antibody was produced from a rabbit immunized with a KLH conjugated synthetic peptide between 388-421 amino acids from zebrafish Becn1.

Storage

Aliquot the Beclin-1 antibody and store frozen at -20oC or colder. Avoid repeated freeze-thaw cycles.