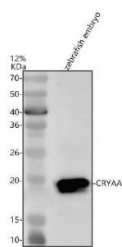


Zebrafish Alpha A Crystallin Antibody / CRYAA (RZ1467)

Catalog No.	Formulation	Size
RZ1467	0.5mg/ml if reconstituted with 0.2ml sterile DI water	100 ug

[Bulk quote request](#)

Species Reactivity	Zebrafish
Format	Antigen affinity purified
Host	Rabbit
Clonality	Polyclonal (rabbit origin)
Isotype	Rabbit Ig
Buffer	Lyophilized from a buffered saline solution containing 2% trehalose. Reconstitute with 0.2 mL distilled water to yield a final antibody concentration of 500 ug/mL.
UniProt	Q8UUZ6
Applications	Western Blot : 0.5-1ug/ml
Limitations	This Zebrafish Alpha A Crystallin Antibody is available for research use only.



Zebrafish Alpha A Crystallin Antibody WB. Western blot analysis of Alpha A Crystallin/CRYAA using anti-Alpha A Crystallin/CRYAA antibody. Electrophoresis was performed on a 12% SDS-PAGE gel for 2 hours. The sample well of each lane was loaded with 30 ug of sample under reducing conditions. Lane 1: zebrafish embryo tissue lysates. After electrophoresis, proteins were transferred to a nitrocellulose membrane at 150 mA for 50-90 minutes. Blocked the membrane with 5% non-fat milk/TBS for 1.5 hour at RT. The membrane was incubated with rabbit anti-Alpha A Crystallin/CRYAA antigen antibody at 0.5 ug/ml overnight at 4oC, then washed with TBS-0.1%Tween 3 times with 5 minutes each and probed with a goat anti-rabbit IgG-HRP secondary antibody at a dilution of 1:5000 for 1.5 hour at RT. The signal is developed using an ECL Plus WB. Western blotting Substrate with Tanon 5200 system. A specific band was detected for Alpha A Crystallin/CRYAA at approximately 20 kDa. The expected band size for Alpha A Crystallin/CRYAA is at 20 kDa.

Description

Enables unfolded protein binding activity. Acts upstream of or within lens development in camera-type eye. Predicted to be active in cytoplasm and nucleus. Is expressed in eye; lens; lens epithelium; lens fiber cell; and solid lens vesicle. Used to study cataract. Human ortholog(s) of this gene implicated in cataract 9 multiple types. Orthologous to human CRYAA (crystallin alpha A).

Application Notes

The optimal working dilution of the Zebrafish Alpha A Crystallin Antibody should be determined empirically by the investigator.

Immunogen

An E.coli-derived Zebrafish Alpha A Crystallin/CRYAA recombinant protein (amino acids M1-S173) was used as the immunogen for the Zebrafish Alpha A Crystallin Antibody.

Storage

After reconstitution, the Zebrafish Alpha A Crystallin Antibody can be stored for up to one month at 4oC. For long-term, aliquot and store at -20oC. Avoid repeated freezing and thawing.