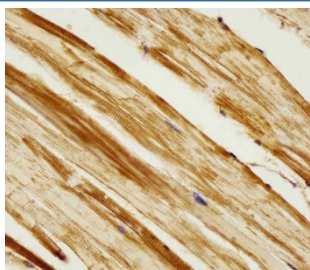


Zebrafish Ak2 Antibody / Adenylate kinase 2 (F54506)

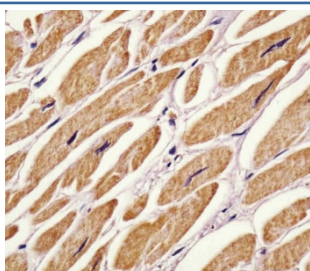
Catalog No.	Formulation	Size
F54506-0.2ML	In 1X PBS, pH 7.4, with 0.09% sodium azide	0.2 ml
F54506-0.05ML	In 1X PBS, pH 7.4, with 0.09% sodium azide	0.05 ml

[Bulk quote request](#)

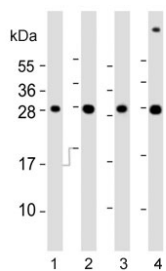
Availability	1-3 business days
Species Reactivity	Zebrafish, Human, Mouse
Format	Purified
Clonality	Polyclonal (rabbit origin)
Isotype	Rabbit Ig
Purity	Antigen affinity purified
UniProt	Q1L8L9
Localization	Cytoplasmic
Applications	Western Blot : 1:500-1:2000 Immunohistochemistry (FFPE) : 1:25 Flow Cytometry : 1:25 (1x10 ⁶ cells)
Limitations	This zebrafish Ak2 antibody is available for research use only.



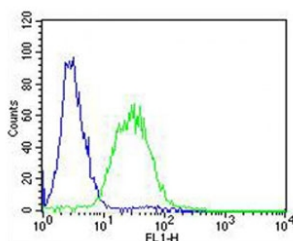
IHC testing of FFPE zebrafish body tissue with zebrafish Ak2 antibody. HIER: steam section in pH6 citrate buffer for 20 min and allow to cool prior to staining.



IHC testing of FFPE human heart tissue with zebrafish Ak2 antibody. HIER: steam section in pH6 citrate buffer for 20 min and allow to cool prior to staining.



Western blot testing of 1) whole zebrafish, 2) zebrafish ZF4, 3) human heart and 4) mouse liver lysate with zebrafish Ak2 antibody. Predicted molecular weight ~26 kDa.



Flow cytometry testing of fixed and permeabilized zebrafish ZF4 cells with zebrafish Ak2 antibody; Blue=isotype control, Green= Ak2 antibody.

Description

Catalyzes the reversible transfer of the terminal phosphate group between ATP and AMP. Plays an important role in cellular energy homeostasis and in adenine nucleotide metabolism. Adenylate kinase activity is critical for regulation of the phosphate utilization and the AMP de novo biosynthesis pathways. Plays a key role in hematopoiesis.

Application Notes

The stated application concentrations are suggested starting points. Titration of the zebrafish Ak2 antibody may be required due to differences in protocols and secondary/substrate sensitivity.

Immunogen

Recombinant human protein was used as the immunogen for the zebrafish Ak2 antibody.

Storage

Aliquot the zebrafish Ak2 antibody and store frozen at -20°C or colder. Avoid repeated freeze-thaw cycles.