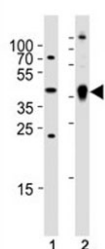


## Zebrafish Ada Antibody (F52652)

Catalog No.	Formulation	Size
F52652-0.4ML	In 1X PBS, pH 7.4, with 0.09% sodium azide	0.4 ml
F52652-0.08ML	In 1X PBS, pH 7.4, with 0.09% sodium azide	0.08 ml

[Bulk quote request](#)

<b>Availability</b>	1-3 business days
<b>Species Reactivity</b>	Zebrafish
<b>Format</b>	Antigen affinity purified
<b>Clonality</b>	Polyclonal (rabbit origin)
<b>Isotype</b>	Rabbit Ig
<b>Purity</b>	Antigen affinity
<b>UniProt</b>	Q6DG22
<b>Applications</b>	Western Blot : 1:1000
<b>Limitations</b>	This zebrafish Ada antibody is available for research use only.



Western blot analysis of (1) zebrafish brain and (2) whole zebrafish tissue lysate using Ada antibody. Ab was diluted at 1:1000 for each lane.

## Description

Catalyzes the hydrolytic deamination of adenosine and 2- deoxyadenosine. Plays an important role in purine metabolism and in adenosine homeostasis. Modulates signaling by extracellular adenosine, and so contributes indirectly to cellular signaling events. May act as a positive regulator of T-cell coactivation (By similarity).

## Application Notes

Titration of the zebrafish Ada antibody may be required due to differences in protocols and secondary/substrate sensitivity.

## Immunogen

This Ada antibody was produced from a rabbit immunized with a KLH conjugated synthetic peptide between 114-148 amino acids from the Central region of zebrafish Ada.

## Storage

Aliquot the zebrafish Ada antibody and store frozen at -20oC or colder. Avoid repeated freeze-thaw cycles.