

ZEB2 Antibody / SIP1 (R31649)

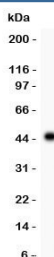
Catalog No.	Formulation	Size
R31649	0.5mg/ml if reconstituted with 0.2ml sterile DI water	100 ug

Bulk quote request

Availability	1-3 business days
Species Reactivity	Human
Format	Antigen affinity purified
Clonality	Polyclonal (rabbit origin)
Isotype	Rabbit IgG
Purity	Antigen affinity
Buffer	Lyophilized from 1X PBS with 2.5% BSA and 0.025% sodium azide
Gene ID	9839
Applications	Western Blot : 0.5-1ug/ml
Limitations	This ZEB2 antibody is available for research use only.



Western blot testing of ZEB2 antibody and SMMC-7721 lysate. Predicted molecular weight 120~136 kDa.



Western blot testing of ZEB2 antibody and recombinant human protein (0.5ng)

Description

Zinc finger E-box-binding homeobox 2, also known as SIP1 or Zinc finger homeobox 1B (ZFHX1B), is a protein that in humans is encoded by the ZEB2 gene. The gene is a member of the ZEB1/Drosophila Zfh1 family of two-handed zinc finger/homeodomain proteins and functions as a DNA-binding transcriptional repressor that interacts with activated SMADs, the transducers of TGF-beta signaling, and interacts with the nucleosome remodeling and histone deacetylation (NURD) complex. By radiation hybrid analysis, this gene is mapped to 2q22. It has been found that synthesis of ZEB2 was upregulated following SNAI1 expression in human cell lines, and the expression of SNAI1 in epithelial cells can trigger an epithelial-mesenchyme transition.

Application Notes

The stated application concentrations are suggested starting amounts. Titration of the ZEB2 antibody may be required due to differences in protocols and secondary/substrate sensitivity.

Immunogen

Human partial recombinant protein (AA 1-200) was used as the immunogen for this ZEB2 antibody.

Storage

After reconstitution, the ZEB2 antibody can be stored for up to one month at 4oC. For long-term, aliquot and store at -20oC. Avoid repeated freezing and thawing.