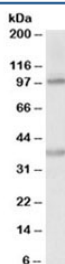


ZEB2 Antibody (R36147)

Catalog No.	Formulation	Size
R36147-100UG	0.5 mg/ml in 1X TBS, pH7.3, with 0.5% BSA (US sourced) and 0.02% sodium azide	100 ug

[Bulk quote request](#)

Availability	1-3 business days
Species Reactivity	Human
Predicted Reactivity	Dog, Mouse, Rat
Format	Antigen affinity purified
Clonality	Polyclonal (goat origin)
Isotype	Goat Ig
Purity	Antigen affinity
Gene ID	9839
Applications	Western Blot : 0.2-0.5ug/ml ELISA (peptide) LOD : 1:32000
Limitations	This ZEB2 antibody is available for research use only.



Western blot testing of human liver lysate with ZEB2 antibody at 0.2ug/ml. Predicted molecular weight ~136kDa. The observed ~100 and ~38kDa bands are possible breakdown fragments.

Description

Additional name(s) for this target protein: Zinc finger E-box binding homeobox 2

Application Notes

Optimal dilution of the ZEB2 antibody should be determined by the researcher.

Immunogen

Amino acids TDSRRQISNIKKEK were used as the immunogen for this ZEB2 antibody.

Storage

Aliquot and store the ZEB2 antibody at -20oC.