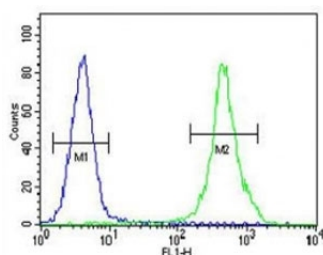


## ZEB2 Antibody (F41913)

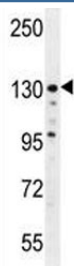
Catalog No.	Formulation	Size
F41913-0.4ML	In 1X PBS, pH 7.4, with 0.09% sodium azide	0.4 ml
F41913-0.08ML	In 1X PBS, pH 7.4, with 0.09% sodium azide	0.08 ml

[Bulk quote request](#)

<b>Availability</b>	1-3 business days
<b>Species Reactivity</b>	Human
<b>Predicted Reactivity</b>	Mouse
<b>Format</b>	Antigen affinity purified
<b>Clonality</b>	Polyclonal (rabbit origin)
<b>Isotype</b>	Rabbit Ig
<b>Purity</b>	Antigen affinity
<b>UniProt</b>	O60315
<b>Applications</b>	Western Blot : 1:1000 Flow Cytometry : 1:10-1:50
<b>Limitations</b>	This ZEB2 antibody is available for research use only.



ZEB2 antibody flow cytometric analysis of MDA-MB435 cells (right histogram) compared to a negative control (left histogram). FITC-conjugated goat-anti-rabbit secondary Ab was used for the analysis.



ZEB2 antibody western blot analysis in MDA-MB435 lysate. Predicted molecular weight 120~136 kDa.

## Description

The protein encoded by this gene is a member of the Zfh1 family of 2-handed zinc finger/homeodomain proteins. It is located in the nucleus and functions as a DNA-binding transcriptional repressor that interacts with activated SMADs. Mutations in this gene are associated with Hirschsprung disease/Mowat-Wilson syndrome. Alternatively spliced transcript variants have been found for this gene.

## Application Notes

Titration of the ZEB2 antibody may be required due to differences in protocols and secondary/substrate sensitivity.

## Immunogen

A portion of amino acids 1078-1105 from the human protein was used as the immunogen for this ZEB2 antibody.

## Storage

Aliquot the ZEB2 antibody and store frozen at -20oC or colder. Avoid repeated freeze-thaw cycles.