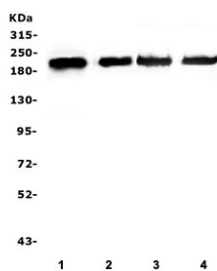


## ZEB1 Antibody (RQ5497)

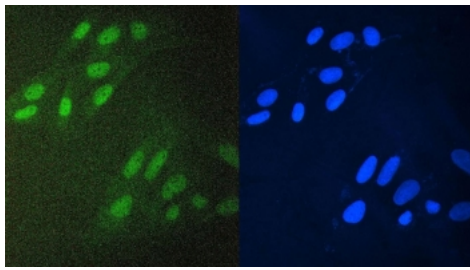
Catalog No.	Formulation	Size
RQ5497	0.5mg/ml if reconstituted with 0.2ml sterile DI water	100 ug

[Bulk quote request](#)

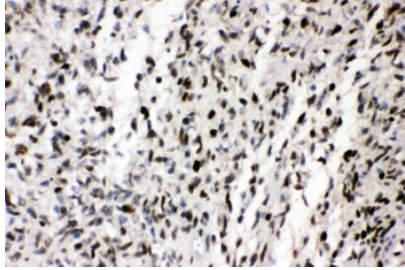
<b>Availability</b>	1-3 business days
<b>Species Reactivity</b>	Human
<b>Format</b>	Antigen affinity purified
<b>Host</b>	Rabbit
<b>Clonality</b>	Polyclonal (rabbit origin)
<b>Isotype</b>	Rabbit IgG
<b>Purity</b>	Affinity purified
<b>Buffer</b>	Lyophilized from 1X PBS with 2% Trehalose and 0.025% sodium azide
<b>UniProt</b>	P37275
<b>Localization</b>	Nuclear
<b>Applications</b>	Western Blot : 0.5-1ug/ml Immunohistochemistry (FFPE) : 1-2ug/ml Immunofluorescence : 2-4ug/ml Flow Cytometry : 1-3ug/million cells
<b>Limitations</b>	This ZEB1 antibody is available for research use only.



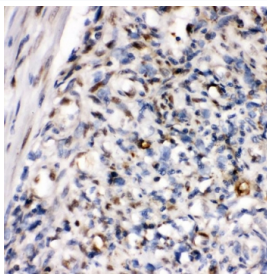
Western blot testing of human 1) SGC-7901, 2) U-87 MG, 3) HEK293 and 4) PC-3 cell lysate with ZEB1 antibody. Predicted molecular weight ~124 kDa but observed at up to ~200 kDa.



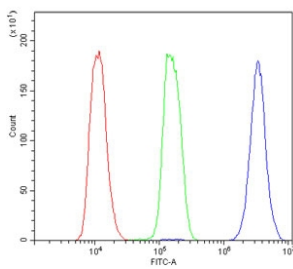
Immunofluorescent staining of FFPE human U-2 OS cells with ZEB1 antibody (green) and DAPI (blue). HIER: boil tissue sections in pH6, 10mM citrate buffer, for 20 min and allow to cool before testing.



IHC staining of FFPE human glioma tissue with ZEB1 antibody. HIER: boil tissue sections in pH6, 10mM citrate buffer, for 20 min and allow to cool before testing.



IHC staining of FFPE human melanoma tissue with ZEB1 antibody. HIER: boil tissue sections in pH6, 10mM citrate buffer, for 20 min and allow to cool before testing.



Flow cytometry testing of human U-2 OS cells with ZEB1 antibody at 1ug/million cells (blocked with goat sera); Red=cells alone, Green=isotype control, Blue= ZEB1 antibody.

## Description

Zinc finger E-box-binding homeobox 1 is a protein that in humans is encoded by the ZEB1 gene. It is mapped to 10p11.22. This gene encodes a zinc finger transcription factor. The encoded protein likely plays a role in transcriptional repression of interleukin 2. Mutations in this gene have been associated with posterior polymorphous corneal dystrophy-3 and late-onset Fuchs endothelial corneal dystrophy. Alternatively spliced transcript variants encoding different isoforms have been described.

## Application Notes

Optimal dilution of the ZEB1 antibody should be determined by the researcher.

## Immunogen

Amino acids LLKAYYALNAQPSAEELSKIADSVNLPLDVVKKWFEKMQ were used as the immunogen for the ZEB1 antibody.

## Storage

After reconstitution, the ZEB1 antibody can be stored for up to one month at 4°C. For long-term, aliquot and store at -20°C. Avoid repeated freezing and thawing.

