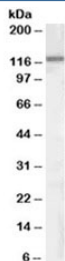


## ZEB1 Antibody (R35719)

Catalog No.	Formulation	Size
R35719-100UG	0.5 mg/ml in 1X TBS, pH7.3, with 0.5% BSA (US sourced) and 0.02% sodium azide	100 ug

[Bulk quote request](#)

<b>Availability</b>	1-3 business days
<b>Species Reactivity</b>	Human, Mouse
<b>Predicted Reactivity</b>	Rat
<b>Format</b>	Antigen affinity purified
<b>Host</b>	Goat
<b>Clonality</b>	Polyclonal (goat origin)
<b>Isotype</b>	Goat Ig
<b>Purity</b>	Antigen affinity
<b>Gene ID</b>	6935
<b>Applications</b>	Western Blot : 0.05-0.2ug/ml ELISA (peptide) LOD : 1:32000
<b>Limitations</b>	This ZEB1 antibody is available for research use only.



Western blot testing of mouse heart lysate with ZEB1 antibody at 0.05ug/ml. Predicted molecular weight ~124 kDa but observed at up to ~200 kDa.

### Description

Additional name(s) for this target protein: Zinc finger E-box binding homeobox 1, AREB6

### Application Notes

Optimal dilution of the ZEB1 antibody should be determined by the researcher.

## **Immunogen**

Amino acids RPQIRQKIENKPLQE were used as the immunogen for this ZEB1 antibody.

## **Storage**

Aliquot and store the ZEB1 antibody at -20oC.