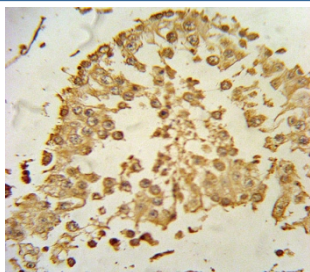


ZDHHC21 Antibody / DHHC-21 (F54815)

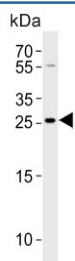
Catalog No.	Formulation	Size
F54815-0.4ML	In 1X PBS, pH 7.4, with 0.09% sodium azide	0.4 ml
F54815-0.08ML	In 1X PBS, pH 7.4, with 0.09% sodium azide	0.08 ml

[Bulk quote request](#)

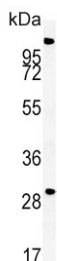
Availability	1-3 business days
Species Reactivity	Human, Mouse
Format	Purified
Host	Rabbit
Clonality	Polyclonal (rabbit origin)
Isotype	Rabbit Ig
Purity	Antigen affinity purified
UniProt	Q8IVQ6
Localization	Cytoplasmic, cell membrane
Applications	Western Blot : 1:500-1:1000 Flow Cytometry : 1:10-1:50 (1x10 ⁶ cells) Immunohistochemistry (FFPE) : 1:10-1:50
Limitations	This ZDHHC21 antibody is available for research use only.



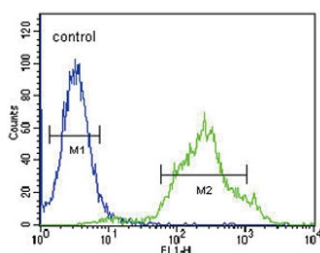
IHC testing of FFPE human testis tissue with ZDHHC21 antibody. HIER: steam section in pH6 citrate buffer for 20 min and allow to cool prior to staining.



Western blot testing of human SH-SY5Y cell lysate with ZDHHC21 antibody. Predicted molecular weight ~31 kDa.



Western blot testing of mouse liver tissue lysate with ZDHHC21 antibody. Predicted molecular weight ~31 kDa.



Flow cytometry testing of human HEK293 cells with ZDHHC21 antibody; Blue=isotype control, Green= ZDHHC21 antibody.

Description

Palmitoyltransferase that catalyzes the addition of palmitate onto various protein substrates. [UniProt]

Application Notes

The stated application concentrations are suggested starting points. Titration of the ZDHHC21 antibody may be required due to differences in protocols and secondary/substrate sensitivity.

Immunogen

A portion of amino acids 59-87 from the human protein was used as the immunogen for the ZDHHC21 antibody.

Storage

Aliquot the ZDHHC21 antibody and store frozen at -20°C or colder. Avoid repeated freeze-thaw cycles.