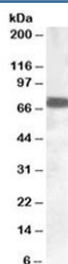


ZDHHC13 Antibody (R34059)

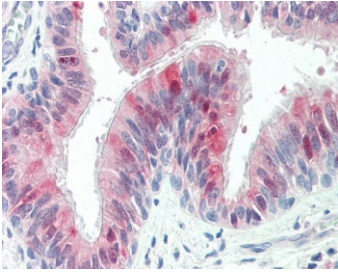
Catalog No.	Formulation	Size
R34059-100UG	0.5 mg/ml in 1X TBS, pH7.3, with 0.5% BSA (US sourced) and 0.02% sodium azide	100 ug

[Bulk quote request](#)

Availability	1-3 business days
Species Reactivity	Human
Predicted Reactivity	Mouse, Rat
Format	Antigen affinity purified
Host	Goat
Clonality	Polyclonal (goat origin)
Isotype	Goat Ig
Purity	Antigen affinity
Gene ID	54503
Localization	Cytoplasmic (Golgi apparatus)
Applications	Western Blot : 1-3ug/ml IHC (FFPE) : 5ug/ml ELISA (peptide) LOD : 1:16000
Limitations	This ZDHHC13 antibody is available for research use only.



Western blot testing of human cerebellum lysate with ZDHHC13 antibody at 0.1ug/ml.
Predicted/observed molecular weight: ~71 kDa.



IHC testing of FFPE human lung tissue with ZDHHC13 antibody at 5ug/ml. Required HIER: steamed antigen retrieval with pH6 citrate buffer; AP-staining.

Description

Additional name(s) for this target protein: HIP14-related protein

Application Notes

Optimal dilution of the ZDHHC13 antibody should be determined by the researcher.

Immunogen

Amino acids FHPAREKVLRSV were used as the immunogen for this ZDHHC13 antibody.

Storage

Aliquot and store the ZDHHC13 antibody at -20oC.