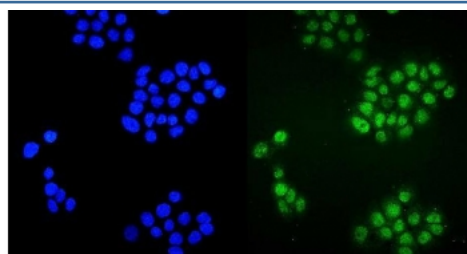


ZBTB16 Antibody / PLZF (RQ5786)

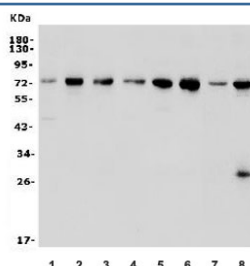
Catalog No.	Formulation	Size
RQ5786	0.5mg/ml if reconstituted with 0.2ml sterile DI water	100 ug

Bulk quote request

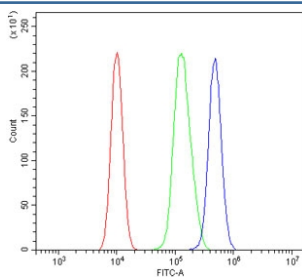
Availability	1-3 business days
Species Reactivity	Human, Mouse, Rat
Format	Antigen affinity purified
Clonality	Polyclonal (rabbit origin)
Isotype	Rabbit IgG
Purity	Affinity purified
Buffer	Lyophilized from 1X PBS with 2% Trehalose and 0.025% sodium azide
UniProt	Q05516
Applications	Western Blot : 0.5-1ug/ml Immunofluorescence : 2-4ug/ml Flow Cytometry : 1-3ug/million cells Direct ELISA : 0.1-0.5ug/ml
Limitations	This ZBTB16 antibody is available for research use only.



Immunofluorescent staining of FFPE human A431 cells with ZBTB16 antibody (green) and DAPI nuclear stain (blue). HIER: steam section in pH6 citrate buffer for 20 min.



Western blot testing of human 1) HL-60, 2) HEK293, 3) ThP-1, 4) HeLa, 5) Raji, 6) K562, 7) rat spleen, 8) mouse RAW264.7 lysate with ZBTB16 antibody. Predicted molecular weight: 74-81 kDa.



Flow cytometry testing of human 293T cells with ZBTB16 antibody at 1ug/million cells (blocked with goat sera); Red=cells alone, Green=isotype control, Blue= ZBTB16 antibody.

Description

Zinc finger and BTB domain-containing protein 16 is a protein that in humans is encoded by the ZBTB16 gene. This gene is a member of the Krueppel C2H2-type zinc-finger protein family and encodes a zinc finger transcription factor that contains nine Kruppel-type zinc finger domains at the carboxyl terminus. This protein is located in the nucleus, is involved in cell cycle progression, and interacts with a histone deacetylase. Specific instances of aberrant gene rearrangement at this locus have been associated with acute promyelocytic leukemia (APL). Alternate transcriptional splice variants have been characterized.

Application Notes

Optimal dilution of the ZBTB16 antibody should be determined by the researcher.

Immunogen

Recombinant human protein (amino acids K23-V673) was used as the immunogen for the ZBTB16 antibody.

Storage

After reconstitution, the ZBTB16 antibody can be stored for up to one month at 4oC. For long-term, aliquot and store at -20oC. Avoid repeated freezing and thawing.