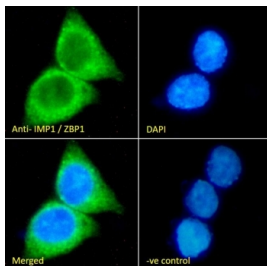


ZBP-1 Antibody / IGF2BP1 (R33853)

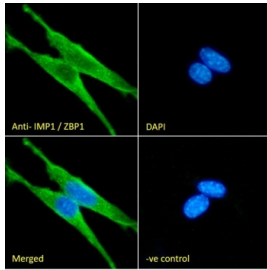
Catalog No.	Formulation	Size
R33853-100UG	0.5 mg/ml in 1X TBS, pH7.3, with 0.5% BSA (US sourced) and 0.02% sodium azide	100 ug

[Bulk quote request](#)

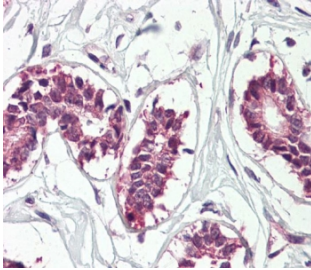
Availability	1-3 business days
Species Reactivity	Human, Mouse
Format	Antigen affinity purified
Host	Goat
Clonality	Polyclonal (goat origin)
Isotype	Goat Ig
Purity	Antigen affinity
Gene ID	10642
Applications	Western Blot : 0.3-1ug/ml Immunohistochemistry (FFPE) : 4-6ug/ml Immunofluorescence : 10ug/ml Flow Cytometry : 10ug/ml ELISA (peptide) LOD : 1:16000
Limitations	This ZBP-1 antibody is available for research use only.



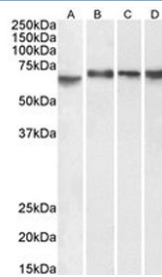
IF/ICC staining of fixed and permeabilized human HepG2 cells with ZBP-1 antibody (green) at 10ug/ml and DAPI nuclear stain (blue).



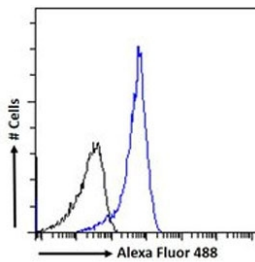
IF/ICC staining of fixed and permeabilized mouse NIH-3T3 cells with ZBP-1 antibody (green) at 10ug/ml and DAPI nuclear stain (blue).



IHC staining of FFPE human breast tissue with ZBP-1 antibody. Required HIER: steamed antigen retrieval with pH6 citrate buffer; AP-staining.



Western blot testing of A) human Caco-2, B) human K562, C) human HepG2 and D) mouse NIH-3T3 cell lysate with ZBP-1 antibody. Predicted molecular weight: ~64 kDa.



FACS testing of fixed and permeabilized human HepG2 cells with ZBP-1 antibody (blue) at 10ug/ml and naive goat Ig (black).

Description

Additional name(s) for this target protein: Insulin-like growth factor 2 mRNA binding protein 1; zipcode-binding protein 1; IMP1; IGF2BP1

Application Notes

Optimal dilution of the ZBP-1 antibody should be determined by the researcher.

Immunogen

Amino acids EKVFAEHKISYSGQ were used as the immunogen for this ZBP-1 antibody.

Storage

Aliquot and store the ZBP-1 antibody at -20oC.

