

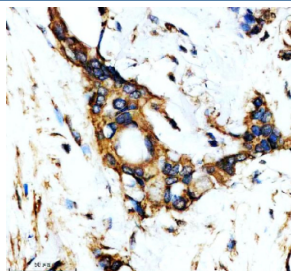
YWHAQ Antibody / 14-3-3 theta [clone HHF-25] (RQ8915)

Catalog No.	Formulation	Size
RQ8915	Antibody in PBS with 0.02% sodium azide, 50% glycerol and 0.4-0.5mg/ml BSA	100 ul

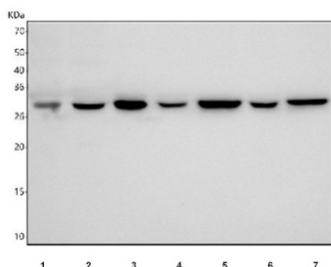
Recombinant **RABBIT MONOCLONAL**

[Bulk quote request](#)

Availability	1-3 days
Species Reactivity	Human
Format	Purified
Host	Rabbit
Clonality	Recombinant Rabbit Monoclonal
Isotype	Rabbit IgG
Clone Name	HHF-25
Purity	Affinity chromatography
UniProt	P27348
Localization	Cytoplasm
Applications	Western Blot : 1:500 Immunohistochemistry (FFPE) : 1:50
Limitations	This YWHAQ antibody is available for research use only.



IHC staining of FFPE human pancreatic cancer tissue with YWHAQ antibody, HRP-secondary and DAB substrate. HIER: boil tissue sections in pH8 EDTA for 20 min and allow to cool before testing.



Western blot testing of 1) human HeLa, 2) human A549, 3) human SH-SY5Y, 4) human U-251, 5) rat brain, 6) rat C6 and 7) mouse brain tissue lysate with YWHAZ antibody. Predicted molecular weight ~28 kDa.

Description

YWHAQ, also known as 14-3-3 theta, is a member of the 14-3-3 protein family that regulates diverse cellular processes including signal transduction, apoptosis, and cell cycle control. It functions as an adaptor protein, binding to phosphorylated partners to influence their localization, stability, and activity. Researchers commonly use a YWHAQ antibody to study these signaling networks.

YWHAQ is widely expressed in human tissues and has been linked to neuronal function, stress responses, and cancer progression. Its interaction with kinases, transcription factors, and cytoskeletal proteins makes it an important regulator of cellular homeostasis. Employing a YWHAQ antibody enables detailed investigation of its role in pathways controlling growth, survival, and differentiation.

NSJ Bioreagents offers a high-quality YWHAQ antibody validated for western blot, immunohistochemistry, and immunoprecipitation. Selecting the right YWHAQ antibody ensures sensitive and reproducible detection in studies of cell signaling, neurobiology, and disease research.

Application Notes

Optimal dilution of the YWHAQ antibody should be determined by the researcher.

Immunogen

A peptide sequence specific to 14-3-3 theta protein was used as the immunogen for the YWHAQ antibody.

Storage

After reconstitution, the YWHAQ antibody can be stored for up to one month at 4°C. For long-term, aliquot and store at -20°C. Avoid repeated freezing and thawing.