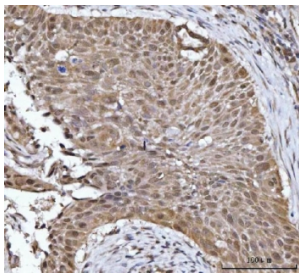


YWHAG Antibody / 14-3-3 gamma (RQ7260)

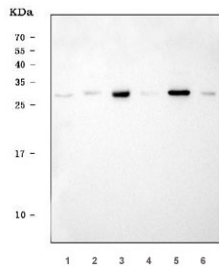
Catalog No.	Formulation	Size
RQ7260	0.5mg/ml if reconstituted with 0.2ml sterile DI water	100 ug

Bulk quote request

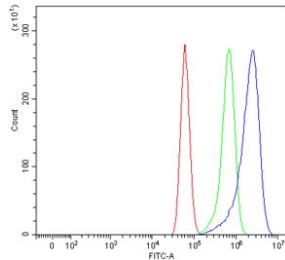
Availability	1-3 business days
Species Reactivity	Human, Mouse, Rat
Format	Antigen affinity purified
Host	Rabbit
Clonality	Polyclonal (rabbit origin)
Isotype	Rabbit IgG
Purity	Antigen affinity purified
Buffer	Lyophilized from 1X PBS with 2% Trehalose
UniProt	P61981
Localization	Cytoplasmic
Applications	Western Blot : 0.5-1ug/ml Immunohistochemistry (FFPE) : 2-5ug/ml Flow Cytometry : 1-3ug/million cells Direct ELISA : 0.1-0.5ug/ml
Limitations	This YWHAG antibody is available for research use only.



IHC staining of FFPE human esophageal squamous carcinoma tissue with YWHAG antibody. HIER: boil tissue sections in pH8 EDTA for 20 min and allow to cool before testing.



Western blot testing of 1) human Jurkat, 2) human placenta, 3) rat brain, 4) rat skeletal muscle, 5) mouse brain and 6) mouse skeletal muscle lysate with YWHAG antibody. Predicted molecular weight ~28 kDa.



Flow cytometry testing of human U-87 MG cells with YWHAG antibody at 1ug/million cells (blocked with goat sera); Red=cells alone, Green=isotype control, Blue= YWHAG antibody.

Description

This gene product belongs to the 14-3-3 family of proteins which mediate signal transduction by binding to phosphoserine-containing proteins. This highly conserved protein family is found in both plants and mammals, and this protein is 100% identical to the rat ortholog. It is induced by growth factors in human vascular smooth muscle cells, and is also highly expressed in skeletal and heart muscles, suggesting an important role for this protein in muscle tissue. It has been shown to interact with RAF1 and protein kinase C, proteins involved in various signal transduction pathways.

Application Notes

Optimal dilution of the YWHAG antibody should be determined by the researcher.

Immunogen

Recombinant human protein (amino acids D21-K162) was used as the immunogen for the YWHAG antibody.

Storage

After reconstitution, the YWHAG antibody can be stored for up to one month at 4oC. For long-term, aliquot and store at -20oC. Avoid repeated freezing and thawing.