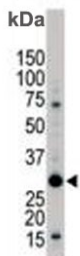


## YWHAB Antibody / 14-3-3 beta/alpha (F54967)

Catalog No.	Formulation	Size
F54967-0.4ML	In 1X PBS, pH 7.4, with 0.09% sodium azide	0.4 ml
F54967-0.08ML	In 1X PBS, pH 7.4, with 0.09% sodium azide	0.08 ml

[Bulk quote request](#)

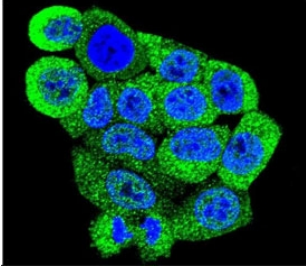
<b>Availability</b>	1-3 business days
<b>Species Reactivity</b>	Human
<b>Format</b>	Purified
<b>Host</b>	Rabbit
<b>Clonality</b>	Polyclonal (rabbit origin)
<b>Isotype</b>	Rabbit Ig
<b>Purity</b>	Purified
<b>UniProt</b>	P31946
<b>Localization</b>	Cytoplasmic
<b>Applications</b>	Immunofluorescence : 1:10-1:50 Western Blot : 1:500-1:1000 Immunohistochemistry (FFPE) : 1:50-1:100
<b>Limitations</b>	This YWHAB antibody is available for research use only.



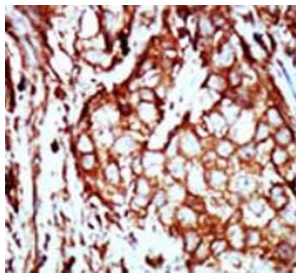
Western blot testing of human Jurkat cell lysate with YWHAB antibody. Predicted molecular weight ~28 kDa.



Western blot testing of 1) non-transfected and 2) transfected 293 cell lysate with YWHAB antibody.



Immunofluorescent staining of human HeLa cells with YWHAB antibody (green) and DAPI nuclear stain (blue).



IHC testing of FFPE human breast cancer tissue with YWHAB antibody. HIER: steam section in pH6 citrate buffer for 20 min and allow to cool prior to staining.

## Description

YWHAB belongs to the 14-3-3 family of proteins, members of which mediate signal transduction by binding to phosphoserine-containing proteins. This highly conserved protein family is found in both plants and mammals. The encoded protein has been shown to interact with RAF1 and CDC25 phosphatases, suggesting that it may play a role in linking mitogenic signaling and the cell cycle machinery. Two transcript variants differing in the 5' UTR, but encoding the same protein, have been identified for the gene. Both variants encode the same protein, however, they are differentially expressed in hematopoietic cells.

## Application Notes

The stated application concentrations are suggested starting points. Titration of the YWHAB antibody may be required due to differences in protocols and secondary/substrate sensitivity.

## Immunogen

A portion of amino acids 217-246 from the human protein was used as the immunogen for the YWHAB antibody.

## Storage

Aliquot the YWHAB antibody and store frozen at -20°C or colder. Avoid repeated freeze-thaw cycles.

