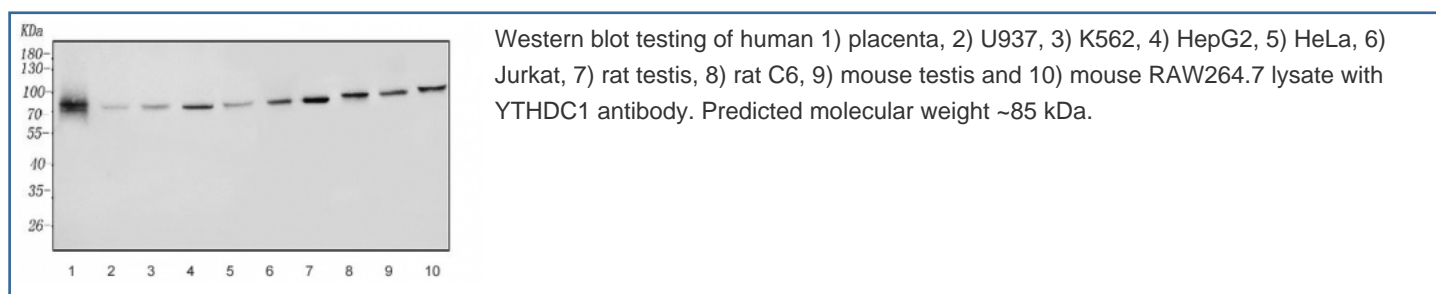


YTHDC1 Antibody (RQ6218)

Catalog No.	Formulation	Size
RQ6218	0.5mg/ml if reconstituted with 0.2ml sterile DI water	100 ug

Bulk quote request

Availability	1-3 business days
Species Reactivity	Human, Mouse, Rat
Format	Antigen affinity purified
Host	Rabbit
Clonality	Polyclonal (rabbit origin)
Isotype	Rabbit IgG
Purity	Affinity purified
Buffer	Lyophilized from 1X PBS with 2% Trehalose and 0.0125% sodium azide
UniProt	Q96MU7
Applications	Western Blot : 1-2ug/ml Direct ELISA : 0.1-0.5ug/ml
Limitations	This YTHDC1 antibody is available for research use only.



Description

YTH domain-containing protein 1 is a protein that in humans is encoded by the YTHDC1 gene. YTHDC1 is a nuclear protein involved in splice site selection that localises to YT bodies; dynamic subnuclear compartments, which first appear at the beginning of S-phase in the cell cycle and disperse during mitosis.

Application Notes

Optimal dilution of the YTHDC1 antibody should be determined by the researcher.

Immunogen

A human recombinant partial protein (amino acids S326-K651) was used as the immunogen for the YTHDC1 antibody.

Storage

After reconstitution, the YTHDC1 antibody can be stored for up to one month at 4oC. For long-term, aliquot and store at -20oC. Avoid repeated freezing and thawing.