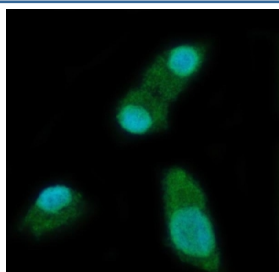


## YTH domain-containing protein 2 Antibody / YTHDC2 (RQ7393)

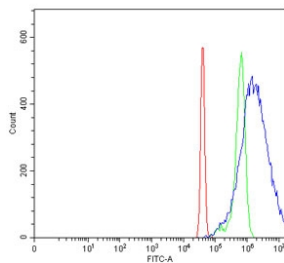
Catalog No.	Formulation	Size
RQ7393	0.5mg/ml if reconstituted with 0.2ml sterile DI water	100 ug

### Bulk quote request

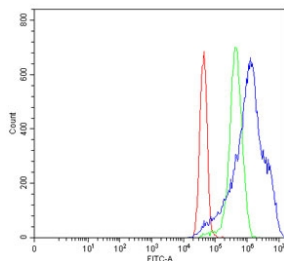
<b>Availability</b>	1-3 business days
<b>Species Reactivity</b>	Human, Mouse, Rat
<b>Format</b>	Antigen affinity purified
<b>Clonality</b>	Polyclonal (rabbit origin)
<b>Isotype</b>	Rabbit IgG
<b>Purity</b>	Antigen affinity purified
<b>Buffer</b>	Lyophilized from 1X PBS with 2% Trehalose
<b>UniProt</b>	Q9H6S0
<b>Localization</b>	Cytoplasmic, nuclear
<b>Applications</b>	Western Blot : 0.5-1ug/ml Immunofluorescence : 5ug/ml Flow Cytometry : 1-3ug/million cells Direct ELISA : 0.1-0.5ug/ml
<b>Limitations</b>	This YTH domain-containing protein 2 antibody is available for research use only.



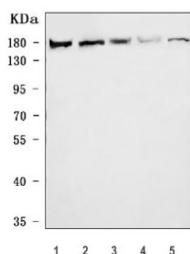
Immunofluorescent staining of FFPE human SiHa cells with YTH domain-containing protein 2 antibody (green) and DAPI nuclear stain (blue). HIER: steam section in pH6 citrate buffer for 20 min.



Flow cytometry testing of human SiHa cells with YTH domain-containing protein 2 antibody at 1ug/million cells (blocked with goat sera); Red=cells alone, Green=isotype control, Blue= YTH domain-containing protein 2 antibody.



Flow cytometry testing of human MCF7 cells with YTH domain-containing protein 2 antibody at 1ug/million cells (blocked with goat sera); Red=cells alone, Green=isotype control, Blue= YTH domain-containing protein 2 antibody.



Western blot testing of 1) human Daudi, 2) huma HeLa, 3) human 293T, 4) rat C6 and 5) mouse NIH 3T3 cell lysate with YTH domain-containing protein 2 antibody. Predicted molecular weight ~160 kDa.

## Description

YTH domain containing 2 is a protein that in humans is encoded by the YTHDC2 gene. This gene encodes a member of the DEAH (Asp-Glu-Ala-His) subfamily of proteins, part of the DEAD (Asp-Glu-Ala-Asp) box family of RNA helicases. The encoded protein binds to N6-methyladenosine, a common modified RNA nucleotide that is enriched in the stop codons and 3' UTRs of eukaryotic messenger RNAs. Binding of proteins to this modified nucleotide may regulate mRNA translation and stability. This gene may be associated with susceptibility to pancreatic cancer in human patients, and knockdown of this gene resulted in reduced proliferation in a human liver cancer cell line.

## Application Notes

Optimal dilution of the YTH domain-containing protein 2 antibody should be determined by the researcher.

## Immunogen

Recombinant human protein (amino acids K105-K1231) was used as the immunogen for the YTH domain-containing protein 2 antibody.

## Storage

After reconstitution, the YTH domain-containing protein 2 antibody can be stored for up to one month at 4oC. For long-term, aliquot and store at -20oC. Avoid repeated freezing and thawing.

