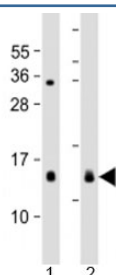


YPEL3 Antibody / Yippee-like 3 (F53888)

Catalog No.	Formulation	Size
F53888-0.05ML	In 1X PBS, pH 7.4, with 0.09% sodium azide	0.05 ml

Bulk quote request

Availability	1-3 business days
Species Reactivity	Mouse, Rat
Predicted Reactivity	Bovine, Human
Format	Antigen affinity purified
Host	Rabbit
Clonality	Polyclonal (rabbit origin)
Isotype	Rabbit Ig
Purity	Antigen affinity
UniProt	P61236
Applications	Western Blot : 1:1000-2000
Limitations	This YPEL3 antibody is available for research use only.



Western blot testing of 1) mouse heart and 2) rat spleen lysate with YPEL3 antibody at 1:2000. Predicted molecular weight: 14 kDa.

Description

Yippee-like 3 is involved in proliferation and apoptosis in myeloid precursor cells.

Application Notes

Titration of the YPEL3 antibody may be required due to differences in protocols and substrate sensitivity.

Immunogen

A portion of amino acids 69-101 from the mouse protein was used as the immunogen for the YPEL3 antibody.

Storage

Aliquot the YPEL3 antibody and store frozen at -20oC or colder. Avoid repeated freeze-thaw cycles.