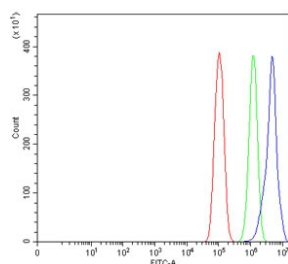


## Yin and yang 1 Antibody / YY1 [clone 6H3E1] (RQ7049)

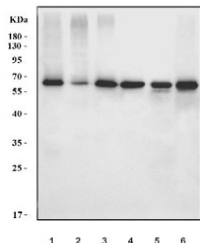
Catalog No.	Formulation	Size
RQ7049	0.5mg/ml if reconstituted with 0.2ml sterile DI water	100 ug

**Bulk quote request**

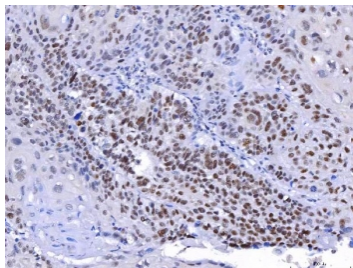
<b>Availability</b>	1-3 business days
<b>Species Reactivity</b>	Human, Mouse, Rat
<b>Format</b>	Antigen affinity purified
<b>Host</b>	Mouse
<b>Clonality</b>	Monoclonal (mouse origin)
<b>Isotype</b>	Mouse IgG2b
<b>Clone Name</b>	6H3E1
<b>Purity</b>	Antigen affinity purified
<b>Buffer</b>	Lyophilized from 1X PBS with 2% Trehalose
<b>UniProt</b>	P25490
<b>Localization</b>	Nuclear
<b>Applications</b>	Western Blot : 0.5-1 ug/ml Immunohistochemistry (FFPE) : 2-5ug/ml Flow Cytometry : 1-3ug/million cells
<b>Limitations</b>	This Yin and yang 1 antibody is available for research use only.



Flow cytometry testing of human PC-3 cells with Yin and yang 1 antibody at 1ug/million cells (blocked with goat sera); Red=cells alone, Green=isotype control, Blue= Yin and yang 1 antibody.



Western blot testing of 1) human Caco-2, 2) human SW620, 3) human MDA-MB-453, 4) human PC-3, 5) rat thymus and 6) mouse thymus tissue lysate with Yin and yang 1 antibody. Predicted molecular weight ~45 kDa but commonly observed at 45~65 kDa.



IHC staining of FFPE human laryngeal squamous cell carcinoma tissue with Yin and yang 1 antibody. HIER: boil tissue sections in pH8 EDTA for 20 min and allow to cool before testing.

## Description

YY1 (Yin Yang 1) is a transcriptional repressor protein in humans that is encoded by the YY1 gene. YY1 is a ubiquitously distributed transcription factor belonging to the GLI-Kruppel class of zinc finger proteins. The protein is involved in repressing and activating a diverse number of promoters. YY1 may direct histone deacetylases and histone acetyltransferases to a promoter in order to activate or repress the promoter, thus implicating histone modification in the function of YY1.

## Application Notes

Optimal dilution of the Yin and yang 1 antibody should be determined by the researcher.

## Immunogen

Amino acids EQKQVQIKTLEGEFSVTMWSSDEKKDIDHETVVEEQ were used as the immunogen for the Yin and yang 1 antibody.

## Storage

After reconstitution, the Yin and yang 1 antibody can be stored for up to one month at 4°C. For long-term, aliquot and store at -20°C. Avoid repeated freezing and thawing.