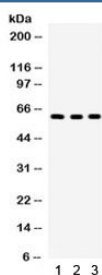


Yes Antibody (R31908)

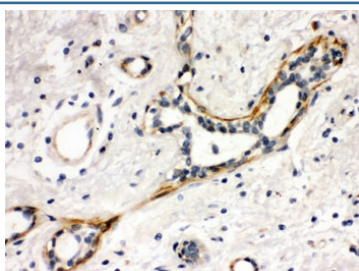
Catalog No.	Formulation	Size
R31908	0.5mg/ml if reconstituted with 0.2ml sterile DI water	100 ug

Bulk quote request

Availability	1-3 business days
Species Reactivity	Human
Format	Antigen affinity purified
Clonality	Polyclonal (rabbit origin)
Isotype	Rabbit IgG
Purity	Antigen affinity
Buffer	Lyophilized from 1X PBS with 2.5% BSA and 0.025% sodium azide
UniProt	P07947
Applications	Western Blot : 0.1-0.5ug/ml IHC (FFPE) : 0.5-1ug/ml
Limitations	This Yes antibody is available for research use only.



Western blot testing of 1) SGC, 2) A549 and 3) HepG2 cell lysate with Yes antibody. Expected/observed molecular weight ~61 kDa.



IHC testing of FFPE human breast cancer tissue with Yes antibody. HIER: Boil the paraffin sections in pH 6, 10mM citrate buffer for 20 minutes and allow to cool prior to staining.

Description

Proto-oncogene tyrosine-protein kinase Yes is an enzyme that in humans is encoded by the YES1 gene. This gene is the cellular homolog of the Yamaguchi sarcoma virus oncogene. The encoded protein has tyrosine kinase activity and belongs to the src family of proteins. This gene lies in close proximity to thymidylate synthase gene on chromosome 18, and a corresponding pseudogene has been found on chromosome 22. YES1 has been shown to interact with Janus kinase 2, CTNND1, RPL10 and Occludin.

Application Notes

Optimal dilution of the Yes antibody should be determined by the researcher.

Immunogen

Amino acids KENKSPAIKYRPENTPEPVSTSVSHYGAE of human Yes1 were used as the immunogen for the Yes antibody.

Storage

After reconstitution, the Yes antibody can be stored for up to one month at 4oC. For long-term, aliquot and store at -20oC. Avoid repeated freezing and thawing.