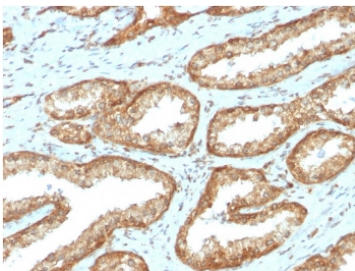


## YB-1 Antibody [clone YBX1/2430] (V7984)

Catalog No.	Formulation	Size
V7984-100UG	0.2 mg/ml in 1X PBS with 0.1 mg/ml BSA (US sourced) and 0.05% sodium azide	100 ug
V7984-20UG	0.2 mg/ml in 1X PBS with 0.1 mg/ml BSA (US sourced) and 0.05% sodium azide	20 ug
V7984SAF-100UG	1 mg/ml in 1X PBS; BSA free, sodium azide free	100 ug

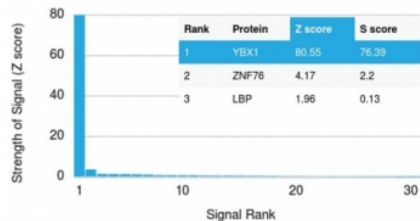
### Bulk quote request

<b>Availability</b>	1-3 business days
<b>Species Reactivity</b>	Human
<b>Format</b>	Purified
<b>Host</b>	Mouse
<b>Clonality</b>	Monoclonal (mouse origin)
<b>Isotype</b>	Mouse IgG2b, kappa
<b>Clone Name</b>	YBX1/2430
<b>Purity</b>	Protein G affinity chromatography
<b>UniProt</b>	P67809
<b>Localization</b>	Nuclear, cytoplasmic
<b>Applications</b>	Immunohistochemistry (FFPE) : 1-2ug/ml
<b>Limitations</b>	This YB-1 antibody is available for research use only.

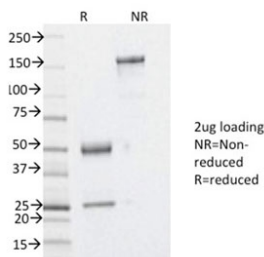


IHC staining of FFPE human prostate carcinoma with YB-1 antibody (clone YBX1/2430).  
HIER: boil tissue sections in pH 9 10mM Tris with 1mM EDTA for 20 min and allow to cool before testing.

#### Human Protein Microarray Specificity Validation



Analysis of HuProt(TM) microarray containing more than 19,000 full-length human proteins using YB-1 antibody (clone YBX1/2430). These results demonstrate the foremost specificity of the YBX1/2430 mAb. Z- and S- score: The Z-score represents the strength of a signal that an antibody (in combination with a fluorescently-tagged anti-IgG secondary Ab) produces when binding to a particular protein on the HuProt(TM) array. Z-scores are described in units of standard deviations (SD's) above the mean value of all signals generated on that array. If the targets on the HuProt(TM) are arranged in descending order of the Z-score, the S-score is the difference (also in units of SD's) between the Z-scores. The S-score therefore represents the relative target specificity of an Ab to its intended target.



SDS-PAGE analysis of purified, BSA-free YB-1 antibody (clone YBX1/2430) as confirmation of integrity and purity.

## Description

Y-box binding protein-1 (YBX1) is the prototypic member of the cold shock protein family that fulfills numerous cellular functions. In the nucleus, YBX1 protein orchestrates transcription of proliferation-related genes, whereas in the cytoplasm it associates with mRNA and directs translation. In human tumor entities, such as breast, lung and prostate cancer, cellular YBX1 expression indicates poor clinical outcome, suggesting that YBX1 is an attractive marker to predict patients' prognosis.

## Application Notes

Optimal dilution of the YB-1 antibody should be determined by the researcher.

## Immunogen

A recombinant human full-length YBX1 protein was used as the immunogen for this YB-1 antibody.

## Storage

Store the YB-1 antibody at 2-8oC (with azide) or aliquot and store at -20oC or colder (without azide).