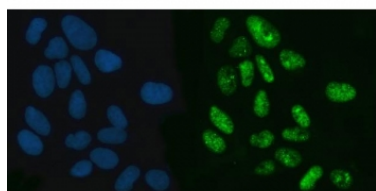


## XPO5 Antibody / Exportin-5 (RQ7434)

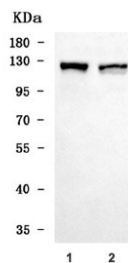
Catalog No.	Formulation	Size
RQ7434	0.5mg/ml if reconstituted with 0.2ml sterile DI water	100 ug

**Bulk quote request**

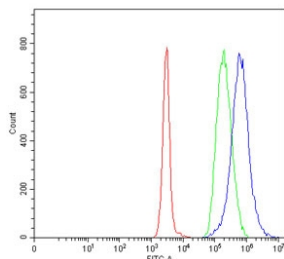
<b>Availability</b>	1-3 business days
<b>Species Reactivity</b>	Human
<b>Format</b>	Antigen affinity purified
<b>Clonality</b>	Polyclonal (rabbit origin)
<b>Isotype</b>	Rabbit IgG
<b>Purity</b>	Antigen affinity purified
<b>Buffer</b>	Lyophilized from 1X PBS with 2% Trehalose
<b>UniProt</b>	Q9HAV4
<b>Localization</b>	Nuclear, cytoplasmic
<b>Applications</b>	Western Blot : 0.5-1ug/ml Immunofluorescence : 5ug/ml Flow Cytometry : 1-3ug/million cells Direct ELISA : 0.1-0.5ug/ml
<b>Limitations</b>	This XPO5 antibody is available for research use only.



Immunofluorescent staining of FFPE human U-2 OS cells with XPO5 antibody (green) and DAPI nuclear stain (blue). HIER: steam section in pH6 citrate buffer for 20 min.



Western blot testing of human 1) Caco-2 and 2) Daudi cell lysate with XPO5 antibody.  
Predicted molecular weight ~136 kDa.



Flow cytometry testing of human Daudi cells with XPO5 antibody at 1ug/million cells (blocked with goat sera); Red=cells alone, Green=isotype control, Blue= XPO5 antibody.

## Description

Exportin-5 (XPO5) is a protein that in humans is encoded by the XPO5 gene. The International Radiation Hybrid Mapping Consortium mapped the XPO5 gene to chromosome 6. This gene encodes a member of the karyopherin family that is required for the transport of small RNAs and double-stranded RNA-binding proteins from the nucleus to the cytoplasm. The encoded protein translocates cargo through the nuclear pore complex in a RanGTP-dependent process.

## Application Notes

Optimal dilution of the XPO5 antibody should be determined by the researcher.

## Immunogen

E. coli-derived recombinant human protein (amino acids M1-L1104) was used as the immunogen for the XPO5 antibody.

## Storage

After reconstitution, the XPO5 antibody can be stored for up to one month at 4°C. For long-term, aliquot and store at -20°C. Avoid repeated freezing and thawing.