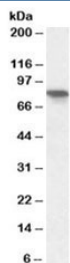


XPNPEP1 Antibody (R34721)

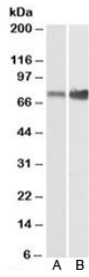
Catalog No.	Formulation	Size
R34721-100UG	0.5 mg/ml in 1X TBS, pH7.3, with 0.5% BSA (US sourced) and 0.02% sodium azide	100 ug

[Bulk quote request](#)

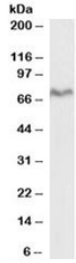
Availability	1-3 business days
Species Reactivity	Human, Mouse, Rat
Predicted Reactivity	Cow, Dog, Pig
Format	Antigen affinity purified
Host	Goat
Clonality	Polyclonal (goat origin)
Isotype	Goat Ig
Purity	Antigen affinity
UniProt	Q9NQW7
Gene ID	7511
Applications	Western Blot : 0.3-1ug/ml ELISA (peptide) LOD : 1:32000
Limitations	This XPNPEP1 antibody is available for research use only.



Western blot testing of human pancreas lysate with XPNPEP1 antibody at 0.3ug/ml.
Predicted molecular weight: ~70/67/75/72kDa (isoforms 1-4).



Western blot of mouse (A) and rat (B) small intestine lysates with XPNPEP1 antibody at 0.1ug/ml. Predicted molecular weight: ~70/67/75/72kDa (isoforms 1-4).



Western blot of pig pancreas lysate with XPNPEP1 antibody at 0.1ug/ml. Predicted molecular weight: ~70/67/75/72kDa (isoforms 1-4).

Description

Additional name(s) for this target protein: X-prolyl aminopeptidase (aminopeptidase P) 1

Application Notes

Optimal dilution of the XPNPEP1 antibody should be determined by the researcher.

1. This XPNPEP1 antibody will detect isoforms 1 and 2.

Immunogen

Amino acids LIRETQPISKQH were used as the immunogen for this XPNPEP1 antibody. This sequence is common to isoforms 1-4.

Storage

Aliquot and store the XPNPEP1 antibody at -20oC.