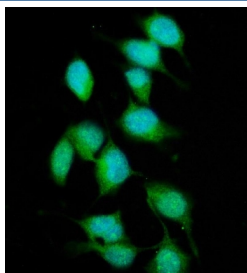


XPC Antibody (RQ5783)

Catalog No.	Formulation	Size
RQ5783	0.5mg/ml if reconstituted with 0.2ml sterile DI water	100 ug

Bulk quote request

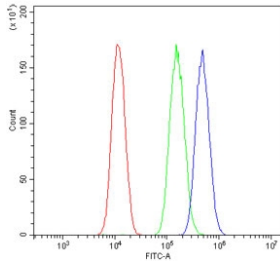
Availability	1-3 business days
Species Reactivity	Human, Mouse, Rat, Monkey
Format	Antigen affinity purified
Host	Rabbit
Clonality	Polyclonal (rabbit origin)
Isotype	Rabbit IgG
Purity	Affinity purified
Buffer	Lyophilized from 1X PBS with 2% Trehalose and 0.025% sodium azide
UniProt	Q01831
Localization	Nuclear, cytoplasmic
Applications	Western Blot : 0.5-1ug/ml Flow Cytometry : 1-3ug/million cells Immunofluorescence : 2-4ug/ml Direct ELISA : 0.1-0.5ug/ml
Limitations	This XPC antibody is available for research use only.



Immunofluorescent staining of FFPE human HeLa cells with XPC antibody (green) and DAPI nuclear stain (blue). HIER: steam section in pH6 citrate buffer for 20 min.



Western blot testing of 1) human MCF7, 2) human A549, 3) rat liver and 4) mouse lung lysate with XPC antibody. Predicted molecular weight ~106 kDa.



Flow cytometry testing of human A549 cells with XPC antibody at 1ug/million cells (blocked with goat sera); Red=cells alone, Green=isotype control, Blue= XPC antibody.

Description

Xeroderma pigmentosum, complementation group C, also known as XPC, is a protein which in humans is encoded by the XPC gene. The protein encoded by this gene is a key component of the XPC complex, which plays an important role in the early steps of global genome nucleotide excision repair (NER). The encoded protein is important for damage sensing and DNA binding, and shows a preference for single-stranded DNA. Mutations in this gene or some other NER components can result in Xeroderma pigmentosum, a rare autosomal recessive disorder characterized by increased sensitivity to sunlight with the development of carcinomas at an early age. Alternatively spliced transcript variants have been found for this gene.

Application Notes

Optimal dilution of the XPC antibody should be determined by the researcher.

Immunogen

Recombinant human protein (amino acids D146-E838) was used as the immunogen for the XPC antibody.

Storage

After reconstitution, the XPC antibody can be stored for up to one month at 4oC. For long-term, aliquot and store at -20oC. Avoid repeated freezing and thawing.