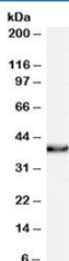


XLF Antibody / XRCC4-like factor (R35438)

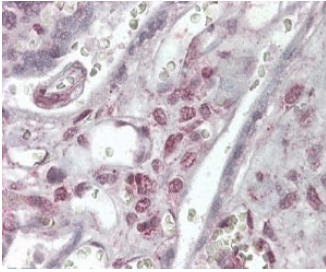
Catalog No.	Formulation	Size
R35438-100UG	0.5 mg/ml in 1X TBS, pH7.3, with 0.5% BSA (US sourced) and 0.02% sodium azide	100 ug

[Bulk quote request](#)

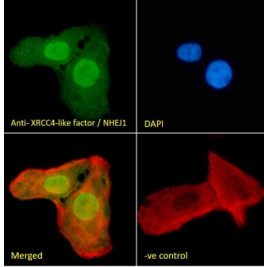
Availability	1-3 business days
Species Reactivity	Human
Format	Antigen affinity purified
Host	Goat
Clonality	Polyclonal (goat origin)
Isotype	Goat Ig
Purity	Antigen affinity
Gene ID	79840
Applications	Western Blot : 0.1-0.3ug/ml Immunohistochemistry (FFPE) : 2.5-5ug/ml Flow Cytometry : 10ug/ml Immunofluorescence : 10ug/ml ELISA (peptide) LOD : 1:64000
Limitations	This XLF antibody is available for research use only.



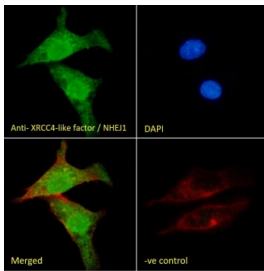
Western blot testing of human thyroid lysate with XLF antibody at 0.1ug/ml. Predicted molecular weight: ~33kDa, routinely observed at ~37kDa. (Ref 1)



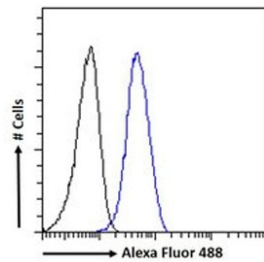
IHC staining of FFPE human placenta with XLF antibody at 4ug/ml. HIER: steamed with pH6 citrate buffer, AP-staining.



IF/ICC staining of fixed and permeabilized human U-2 OS cells with XLF antibody (green) at 10ug/ml, DAPI nuclear stain (blue) and Phalloidin (red).



IF/ICC staining of fixed and permeabilized human HepG2 cells with XLF antibody (green) at 10ug/ml, DAPI nuclear stain (blue) and Phalloidin (red).



FACS testing of fixed and permeabilized human HepG2 cells with XLF antibody (blue) at 10ug/ml and naive goat Ig (black).

Description

Additional name(s) for this target protein: XRCC4-like factor, Nonhomologous end-joining factor 1, NHEJ1

Application Notes

Optimal dilution of the XLF antibody should be determined by the researcher.

Immunogen

Amino acids QRPQLSKVKRKKPR were used as the immunogen for this XLF antibody.

Storage

Aliquot and store the XLF antibody at -20oC.

References (1)

