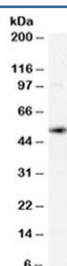


XCT Antibody / SLC7A11 (R34450)

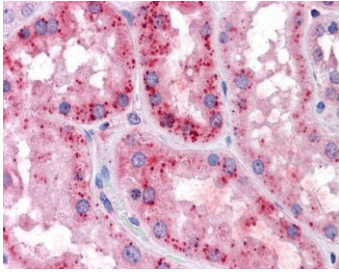
Catalog No.	Formulation	Size
R34450-100UG	0.5 mg/ml in 1X TBS, pH7.3, with 0.5% BSA (US sourced) and 0.02% sodium azide	100 ug

[Bulk quote request](#)

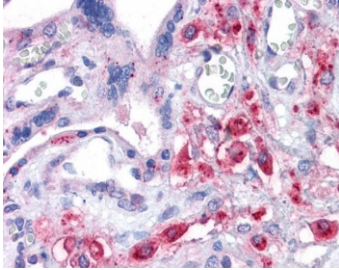
Availability	1-3 business days
Species Reactivity	Human, Rat
Predicted Reactivity	Dog
Format	Antigen affinity purified
Clonality	Polyclonal (goat origin)
Isotype	Goat Ig
Purity	Antigen affinity
Gene ID	23657
Localization	Cytoplasmic, membrane
Applications	Western Blot : 0.02-0.06ug/ml IHC (FFPE) : 3-6ug/ml ELISA (peptide) LOD : 1:128000
Limitations	This xCT antibody is available for research use only.



Western blot testing of human spleen lysate with xCT antibody at 0.02ug/ml. Predicted molecular weight ~55 kDa.



IHC testing of FFPE human kidney tissue with XCT antibody at 3.75ug/ml. HIER: steamed antigen retrieval with pH6 citrate buffer; AP-staining.



IHC testing of FFPE human placental tissue with XCT antibody at 3.75ug/ml. HIER: steamed antigen retrieval with pH6 citrate buffer; AP-staining.

Description

Additional name(s) for this target protein: Solute carrier family 7 (cationic amino acid transporter, y⁺ system) member 11; SLC7A11

Application Notes

Optimal dilution of the xCT antibody should be determined by the researcher.

Immunogen

Amino acids KGQTQNFKDAFSGRD were used as the immunogen for this xCT antibody.

Storage

Aliquot and store the xCT antibody at -20°C.