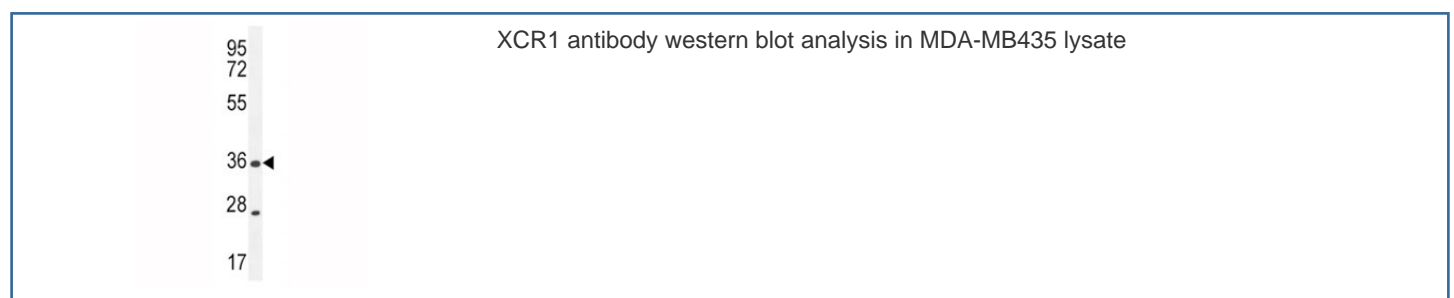


XCR1 Antibody / Lymphotactin Receptor (F41879)

Catalog No.	Formulation	Size
F41879-0.4ML	In 1X PBS, pH 7.4, with 0.09% sodium azide	0.4 ml
F41879-0.08ML	In 1X PBS, pH 7.4, with 0.09% sodium azide	0.08 ml

[Bulk quote request](#)

Availability	1-3 business days
Species Reactivity	Human
Format	Antigen affinity purified
Clonality	Polyclonal (rabbit origin)
Isotype	Rabbit Ig
Purity	Antigen affinity
UniProt	P46094
Applications	Western Blot : 1:1000
Limitations	This XCR1 antibody is available for research use only.



Description

The protein encoded by this gene is a chemokine receptor belonging to the G protein-coupled receptor superfamily. The family members are characterized by the presence of 7 transmembrane domains and numerous conserved amino acids. This receptor is most closely related to RBS11 and the MIP1- α /RANTES receptor. It transduces a signal by increasing the intracellular calcium ions level. The viral macrophage inflammatory protein-II is an antagonist of this receptor and blocks signaling. Two alternatively spliced transcript variants encoding the same protein have been found for this gene.

Application Notes

Titration of the XCR1 antibody may be required due to differences in protocols and secondary/substrate sensitivity.

Immunogen

A portion of amino acids 305-333 from human Lymphotactin Receptor was used as the immunogen for this XCR1 antibody.

Storage

Aliquot the XCR1 antibody and store frozen at -20oC or colder. Avoid repeated freeze-thaw cycles.