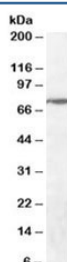


WIZ Antibody (R35782)

Catalog No.	Formulation	Size
R35782-100UG	0.5 mg/ml in 1X TBS, pH7.3, with 0.5% BSA (US sourced) and 0.02% sodium azide	100 ug

[Bulk quote request](#)

Availability	1-3 business days
Species Reactivity	Human
Predicted Reactivity	Mouse, Rat
Format	Antigen affinity purified
Clonality	Polyclonal (goat origin)
Isotype	Goat Ig
Purity	Antigen affinity
Gene ID	58525
Applications	Western Blot : 0.3-1ug/ml ELISA (peptide) LOD : 1:2000
Limitations	This WIZ antibody is available for research use only.



Western blot testing of human cerebellum lysate with WIZ antibody at 0.3ug/ml.
Predicted molecular weight: ~85kDa.

Description

Additional name(s) for this target protein: Widely-interspaced zinc finger motifs

Application Notes

Optimal dilution of the WIZ antibody should be determined by the researcher.

Immunogen

Amino acids RSYIQGGRPFTKKFR were used as the immunogen for this WIZ antibody.

Storage

Aliquot and store the WIZ antibody at -20oC.