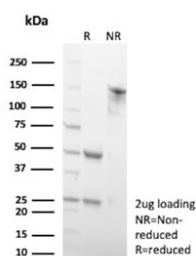


## WIPI2 Antibody [clone 2A2] (V8975)

Catalog No.	Formulation	Size
V8975-100UG	0.2 mg/ml in 1X PBS with 0.1 mg/ml BSA (US sourced), 0.05% sodium azide	100 ug
V8975-20UG	0.2 mg/ml in 1X PBS with 0.1 mg/ml BSA (US sourced), 0.05% sodium azide	20 ug
V8975SAF-100UG	1 mg/ml in 1X PBS; BSA free, sodium azide free	100 ug

[Bulk quote request](#)

<b>Availability</b>	1-3 business days
<b>Species Reactivity</b>	Human, Mouse
<b>Format</b>	Purified
<b>Host</b>	Mouse
<b>Clonality</b>	Monoclonal (mouse origin)
<b>Isotype</b>	Mouse IgG1, kappa
<b>Clone Name</b>	2A2
<b>Purity</b>	Protein A/G affinity
<b>UniProt</b>	Q9Y4P8
<b>Applications</b>	ELISA (order BSA-free Format For Coating) : Flow Cytometry : 1-2ug/million cells
<b>Limitations</b>	This WIPI2 antibody is available for research use only.



SDS-PAGE analysis of purified, BSA-free WIPI2 antibody (clone 2A2) as confirmation of integrity and purity.

## Description

WD40 repeat proteins are key components of many essential biologic functions. They regulate the assembly of multiprotein complexes by presenting a beta-propeller platform for simultaneous and reversible protein-protein interactions. Members of the WIPI subfamily of WD40 repeat proteins, such as WIPI2 (WD repeat domain

phosphoinositide-interacting protein 2), have a 7-bladed propeller structure and contain a conserved motif for interaction with phospholipids.

## **Application Notes**

Optimal dilution of the WIPI2 antibody should be determined by the researcher.

## **Immunogen**

A portion of amino acids 418-436 was used as the immunogen for the WIPI2 antibody.

## **Storage**

Aliquot the WIPI2 antibody and store frozen at -20oC or colder. Avoid repeated freeze-thaw cycles.