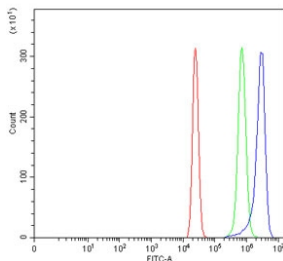


## WIPF3 Antibody / CR16 (RQ7559)

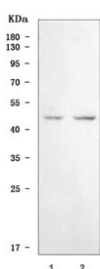
Catalog No.	Formulation	Size
RQ7559	0.5mg/ml if reconstituted with 0.2ml sterile DI water	100 ug

**Bulk quote request**

<b>Availability</b>	1-3 business days
<b>Species Reactivity</b>	Human
<b>Format</b>	Antigen affinity purified
<b>Host</b>	Rabbit
<b>Clonality</b>	Polyclonal (rabbit origin)
<b>Isotype</b>	Rabbit IgG
<b>Purity</b>	Antigen affinity purified
<b>Buffer</b>	Lyophilized from 1X PBS with 2% Trehalose
<b>UniProt</b>	A6NGB9
<b>Applications</b>	Western Blot : 0.5-1ug/ml Flow Cytometry : 1-3ug/million cells
<b>Limitations</b>	This WIPF3 antibody is available for research use only.



Flow cytometry testing of human U-2 OS cells with WIPF3 antibody at 1ug/million cells (blocked with goat sera); Red=cells alone, Green=isotype control, Blue= WIPF3 antibody.



Western blot testing of human 1) K562 and 2) 293T cell lysate with WIPF3 antibody. Predicted molecular weight ~49 kDa.

## Description

WAS/WASL-interacting protein family member 3 (WIPF3), also called Corticosteroids and regional expression protein 16 homolog (CR16), is predicted to enable SH3 domain binding activity and actin binding activity. Predicted to be involved in actin filament-based movement. Predicted to be located in cytosol. Predicted to be active in actin filament.

## Application Notes

Optimal dilution of the WIPF3 antibody should be determined by the researcher.

## Immunogen

Amino acids EDFPPPDEYKPCQKIYPSKIPR from the human protein were used as the immunogen for the WIPF3 antibody.

## Storage

After reconstitution, the WIPF3 antibody can be stored for up to one month at 4°C. For long-term, aliquot and store at -20°C. Avoid repeated freezing and thawing.