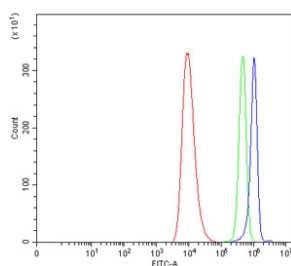


## WIPF1 Antibody / WASP-interacting protein (RQ7523)

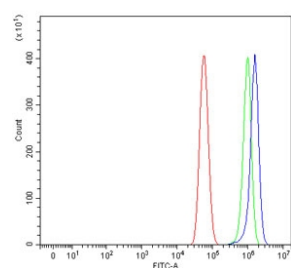
Catalog No.	Formulation	Size
RQ7523	0.5mg/ml if reconstituted with 0.2ml sterile DI water	100 ug

**Bulk quote request**

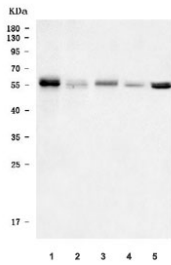
<b>Availability</b>	1-3 business days
<b>Species Reactivity</b>	Human, Mouse, Rat
<b>Format</b>	Antigen affinity purified
<b>Host</b>	Rabbit
<b>Clonality</b>	Polyclonal (rabbit origin)
<b>Isotype</b>	Rabbit IgG
<b>Purity</b>	Antigen affinity purified
<b>Buffer</b>	Lyophilized from 1X PBS with 2% Trehalose
<b>UniProt</b>	O43516
<b>Applications</b>	Western Blot : 0.5-1ug/ml Flow Cytometry : 1-3ug/million cells
<b>Limitations</b>	This WIPF1 antibody is available for research use only.



Flow cytometry testing of human HEL cells with WIPF1 antibody at 1ug/million cells (blocked with goat sera); Red=cells alone, Green=isotype control, Blue= WIPF1 antibody.



Flow cytometry testing of human U-87 MG cells with WIPF1 antibody at 1ug/million cells (blocked with goat sera); Red=cells alone, Green=isotype control, Blue= WIPF1 antibody.



Western blot testing of 1) human Daudi, 2) human MOLT4, 3) rat spleen, 4) mouse spleen and 5) mouse NIH 3T3 cell lysate with WIPF1 antibody. Commonly observed molecular weight: 50-55 kDa with a possible ~36 kDa isoform.

## Description

WAS/WASL-interacting protein family member 1, also called WAS/WASL-interacting protein (WIP), is a protein that in humans is encoded by the WIPF1 gene. This gene encodes a protein that plays an important role in the organization of the actin cytoskeleton. The encoded protein binds to a region of Wiskott-Aldrich syndrome protein that is frequently mutated in Wiskott-Aldrich syndrome, an X-linked recessive disorder. Impairment of the interaction between these two proteins may contribute to the disease. Two transcript variants encoding the same protein have been identified for this gene.

## Application Notes

Optimal dilution of the WIPF1 antibody should be determined by the researcher.

## Immunogen

Amino acids DSPCEDEWESRFYFHPISDL from the human protein were used as the immunogen for the WIPF1 antibody.

## Storage

After reconstitution, the WIPF1 antibody can be stored for up to one month at 4°C. For long-term, aliquot and store at -20°C. Avoid repeated freezing and thawing.