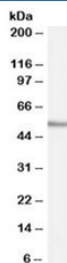


WIPF1 Antibody / WASP-interacting protein (R34505)

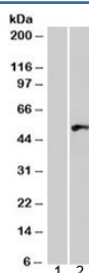
Catalog No.	Formulation	Size
R34505-100UG	0.5 mg/ml in 1X TBS, pH7.3, with 0.5% BSA (US sourced) and 0.02% sodium azide	100 ug

[Bulk quote request](#)

Availability	1-3 business days
Species Reactivity	Human
Predicted Reactivity	Mouse, Rat, Dog
Format	Antigen affinity purified
Host	Goat
Clonality	Polyclonal (goat origin)
Isotype	Goat Ig
Purity	Antigen affinity
Gene ID	7456
Applications	Western Blot : 0.03-0.1ug/ml ELISA (peptide) LOD : 1:64000
Limitations	This WIPF1 antibody is available for research use only.



Western blot testing of human tonsil lysate with WIPF1 antibody at 0.03ug/ml. Commonly observed molecular weight: 50-55 kDa with a possible ~36 kDa isoform.



Western blot of HEK293 lysate overexpressing WIPF1 probed with WIPF1 antibody (mock transfection in lane 1). Commonly observed molecular weight: 50-55 kDa with a possible ~36 kDa isoform.

Description

Additional name(s) for this target protein: WAS/WASL interacting protein family, member 1

Application Notes

Optimal dilution of the WIPF1 antibody should be determined by the researcher.

Immunogen

Amino acids KLARNESRSGSNRRE were used as the immunogen for this WIPF1 antibody.

Storage

Aliquot and store the WIPF1 antibody at -20oC.