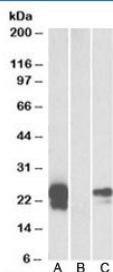


## WFDC2 Antibody / HE4 (R34065)

Catalog No.	Formulation	Size
R34065-100UG	0.5 mg/ml in 1X TBS, pH7.3, with 0.5% BSA (US sourced) and 0.02% sodium azide	100 ug

### Bulk quote request

Availability	1-3 business days
Species Reactivity	Human
Predicted Reactivity	Dog
Format	Antigen affinity purified
Clonality	Polyclonal (goat origin)
Isotype	Goat Ig
Purity	Antigen affinity
Gene ID	10406
Localization	Cytoplasmic, secreted
Applications	Western Blot : 1-3ug/ml ELISA (peptide) LOD : 1:16000
Limitations	This WFDC2 antibody is available for research use only.



Western blot test of HEK293 lysate overexpressing human WFDC2-MYC with WFDC2 antibody [1ug/ml] in Lane A and anti-MYC [1/1000] in lane C. Mock-transfected HEK293 probed with WFDC2 antibody [1ug/ml] in Lane B. Predicted molecular weight: ~13/25kDa (unmodified/glycosylated).

## Description

Additional name(s) for this target protein: WAP four-disulfide core domain 2; Human epididymal protein 4 (HE4)

## Application Notes

Optimal dilution of the WFDC2 antibody should be determined by the researcher.

## Immunogen

Amino acids GAEKTGVCPELQADQ were used as the immunogen for this WFDC2 antibody.

## Storage

Aliquot and store the WFDC2 antibody at -20oC.

## References (1)