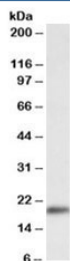


## Wfdc1 Antibody (R35738)

Catalog No.	Formulation	Size
R35738-100UG	0.5 mg/ml in 1X TBS, pH7.3, with 0.5% BSA (US sourced) and 0.02% sodium azide	100 ug

[Bulk quote request](#)

Availability	1-3 business days
Species Reactivity	Mouse
Predicted Reactivity	Rat
Format	Antigen affinity purified
Host	Goat
Clonality	Polyclonal (goat origin)
Isotype	Goat Ig
Purity	Antigen affinity
Gene ID	67866
Applications	Western Blot : 0.3-1ug/ml ELISA (peptide) LOD : 1:16000
Limitations	This Wfdc1 antibody is available for research use only.



Western blot testing of mouse heart lysate with Wfdc1 antibody at 0.3ug/ml. Predicted molecular weight: ~23kDa.

## Description

Additional name(s) for this target protein: WAP four-disulfide core domain 1

## Application Notes

Optimal dilution of the Wfdc1 antibody should be determined by the researcher.

## Immunogen

Amino acids RQRLHKEYPEGDSKN were used as the immunogen for this Wfdc1 antibody.

## Storage

Aliquot and store the Wfdc1 antibody at -20oC.